

# ZONING MAP

**Zoning Districts**

Agricultural Research (AR)	Suburban Single Family Residential (R1B)
General Commercial (C)	Two Family Residential (R2)
Forest/Gamelands (FG)	Townhouse Residential (R3)
General Industrial (I)	Multi-Family Residential (R4)
Light Industry, Research & Development (IRD)	Rural Agricultural (RA)
Mobile Home Park (MHP)	Rural Residential (RR)
Office Commercial (OC)	Terraced Streetscape District (TSD)
Planned Residential Development (PRD)	Traditional Town Development (TTD)
Single Family Residential (R1)	Village (V)

**Legend**

<b>Overlay Districts</b>	<b>Municipal Features</b>
Airport Overlay District (AOD)	Streets
Corridor Overlay District (COD)	Parcel Boundaries
Ridge Overlay District (ROD)	Municipal Boundaries
<b>Riparian Buffer Overlay Districts (RBOD)</b>	<b>Source Water Protection Areas</b>
35' Buffer	Source Water Protection Zone II
65' Buffer or Extent of Floodplain	
50' Wetland Buffer	

Ordinance	Date	Revision	Ordinance	Date	Revision
233	7/13/1982	RA to RR	632	10/20/1995	R1 to C
256	3/22/1983	OC to RA	633	12/11/1995	RR and IRD to PRD
265	1/26/1984	R1 to R4	667	2/18/1997	RR and R1 to R2
297	8/13/1985	R3 to R1	676	7/7/1997	R1 to PRD
298	8/13/1985	R3 to RR	695	3/2/1998	Establish COD
307	1/28/1986	R1 to R4	696	6/1/1998	R2 and RA to R1
307	1/28/1986	R3 to C and R4	724	4/5/1999	R2 to C
315	7/8/1986	RA to R1	727	4/19/1999	RR to C
319	8/12/1986	RA to RR and R1	736	9/7/1999	Establish AR
321	9/9/1986	I to C	738	10/18/1989	Establish FG
388	4/4/1989	R3 to R4	749	3/6/2000	RA to C
411	12/5/1989	Establish R1B	753	5/15/2000	RA to C
412	12/5/1989	RA to R1B	774	5/21/2001	RA to C
413	12/5/1989	RA to R1	835	9/7/2004	RA to R4
414	12/5/1989	RA to R1	850	5/16/2005	Establish ROD
415	12/5/1989	RA to R1	858	12/12/2005	Establish TTD
451	4/2/1990	RR to R1	863	5/1/2006	I and IRD to TTD
461	8/20/1990	R3 to R4	885	6/18/2007	RA to TTD
503	9/16/1991	R1 to OC	924	5/18/2009	Establish RBOD
505	10/7/1991	R4 to C	943	2/7/2011	Establish TSD
512	2/18/1992	RA to R1	944	2/7/2011	C to TSD
520	3/16/1992	RA to R1	947	2/7/2011	Establish AOD
529	6/15/1992	R2 to IRD to C	983	3/17/2014	Update COD
529	6/15/1992	R2 to R1	995	11/17/2014	OC to C
529	6/15/1992	IRD to I	1004	8/17/2015	RR to R3
534	11/15/1992	IRD to C	1024	11/7/2016	RA to C
553	6/7/1993	IRD to PRD	1042	6/18/2018	RA to R1 and C
567	12/13/1992	IRD to R1	1046	1/21/2019	Establish SWPO
583	2/18/1994	R1 to PRD	1061	11/18/2020	RA to FG and AR
590	6/20/1994	R3 to C			RA to AR and C
596	10/17/1994	IRD to PRD			RR to FG

ZONING CHANGE BY RESOLUTION NUMBER: 2015-32 11/16/2015 R4 to PRD

THIS IS TO CERTIFY THAT THIS IS THE ZONING MAP OF FERGUSON TOWNSHIP AS ADOPTED BY THE ABOVE ORDINANCES, AS OF NOVEMBER 16, 2020.

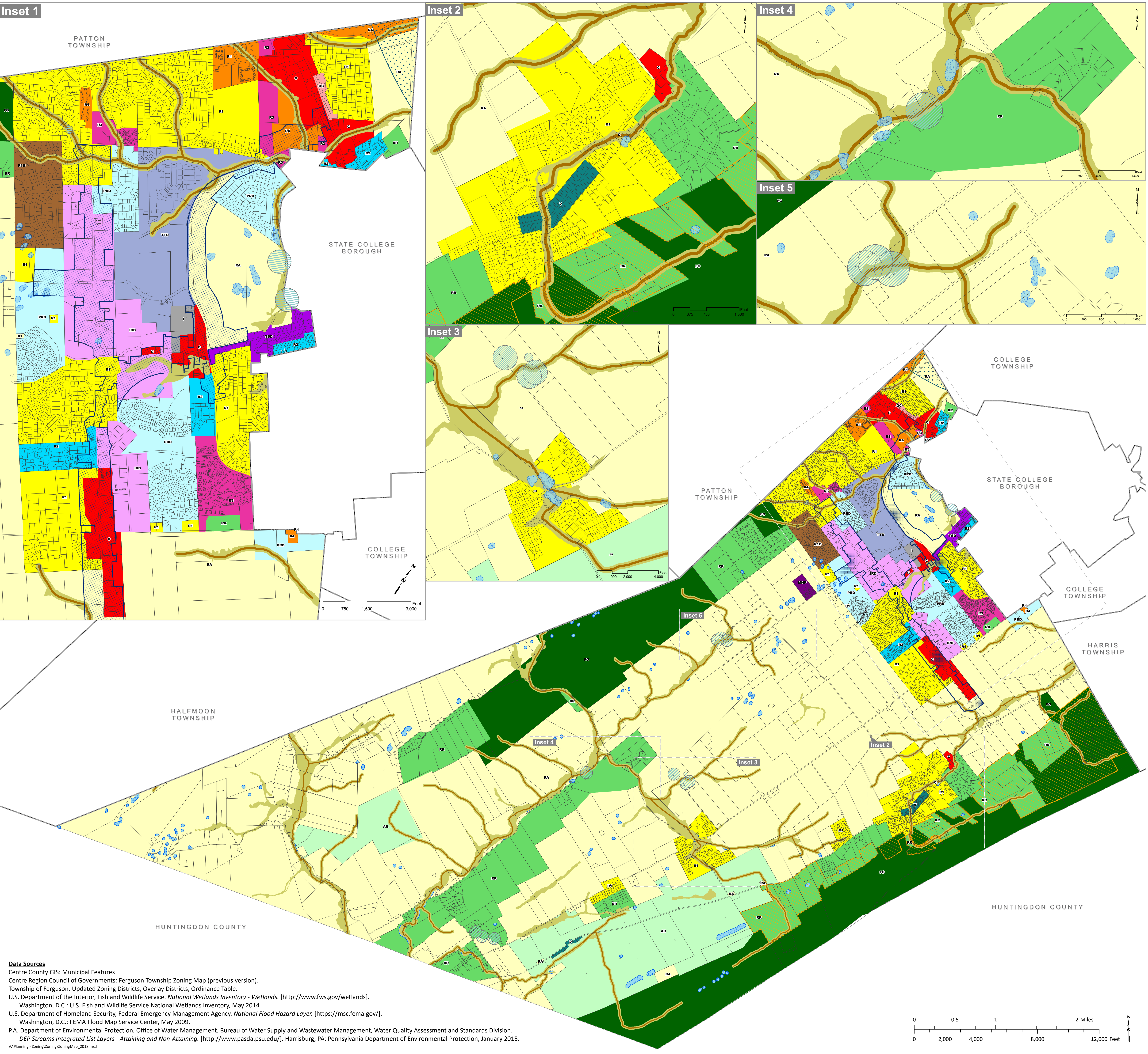
CHAIRMAN \_\_\_\_\_ DATE \_\_\_\_\_

BOARD OF SUPERVISORS \_\_\_\_\_ DATE \_\_\_\_\_

TOWNSHIP MANAGER \_\_\_\_\_ DATE \_\_\_\_\_

Map Date: 8/30/2022

Ferguson Township Office  
3147 Research Drive · State College, PA · 16801  
(814) 238-4651 · [www.twp.ferguson.pa.us](http://www.twp.ferguson.pa.us)



**Data Sources**  
Centre County GIS: Municipal Features  
Centre Region Council of Governments: Ferguson Township Zoning Map (previous version).  
Township of Ferguson: Updated Zoning Districts, Overlay Districts, Ordinance Table.  
U.S. Department of the Interior, Fish and Wildlife Service. *National Wetlands Inventory*. [<http://www.fws.gov/wetlands>].  
Washington, D.C.: U.S. Fish and Wildlife Service National Wetlands Inventory, May 2014.  
U.S. Department of Homeland Security, Federal Emergency Management Agency. *National Flood Hazard Layer*. [<https://msc.fema.gov/>].  
Washington, D.C.: FEMA Flood Map Service Center, May 2009.  
PA. Department of Environmental Protection, Office of Water Management, Bureau of Water Supply and Wastewater Management, Water Quality Assessment and Standards Division.  
*DEP Streams Integrated List Layers - Attaining and Non-Attaining*. [<http://www.pasda.psu.edu/>]. Harrisburg, PA: Pennsylvania Department of Environmental Protection, January 2015.  
V:\Planning - Zoning\ZoningMap\_2018.mxd

