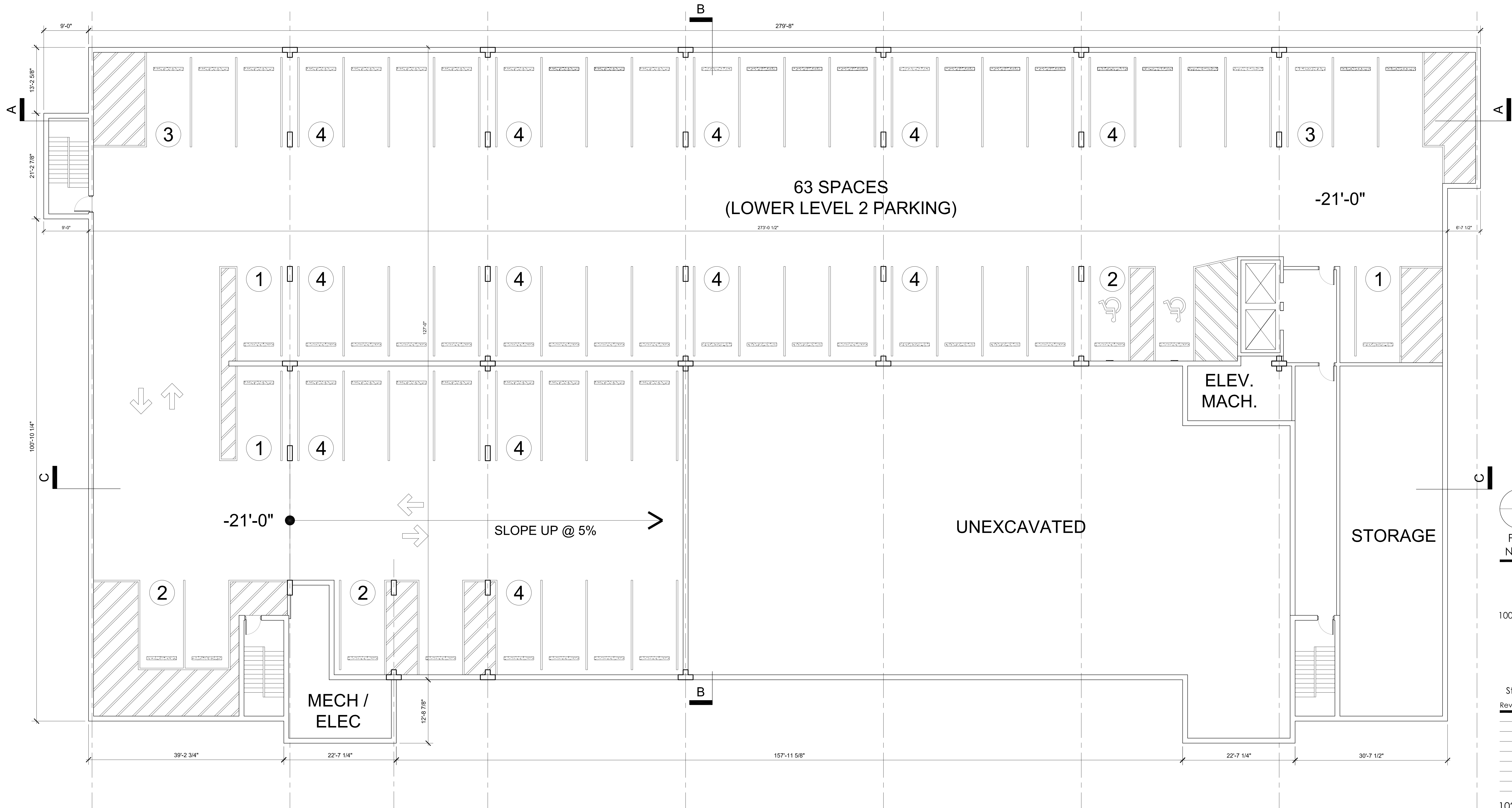
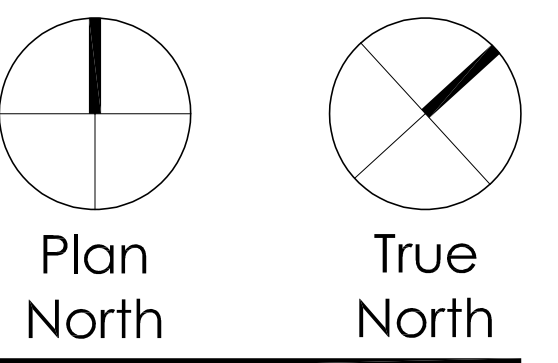


CIVIL Engineer
GD&F Engineers
3121 Fairway Drive
Altoona, PA 16602
814.943.5214
Lighting Designer
S & S Lighting Design
19 Crescent Ave.
Summit, NJ 07901
908.578.0460



LOWER LEVEL 2 FLOOR PLAN

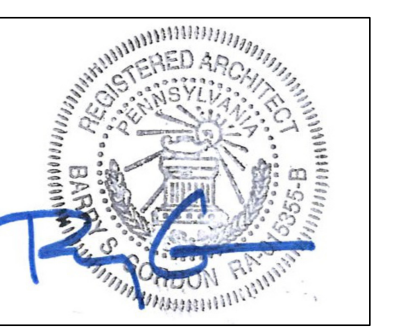


West College
Mixed Use
Development
1004/1006 W College Ave
State College, PA

Developed By
Highland Holding
Group, Inc.
250 East Beaver Ave.
State College, PA 16801

Revision No. _____ Date _____

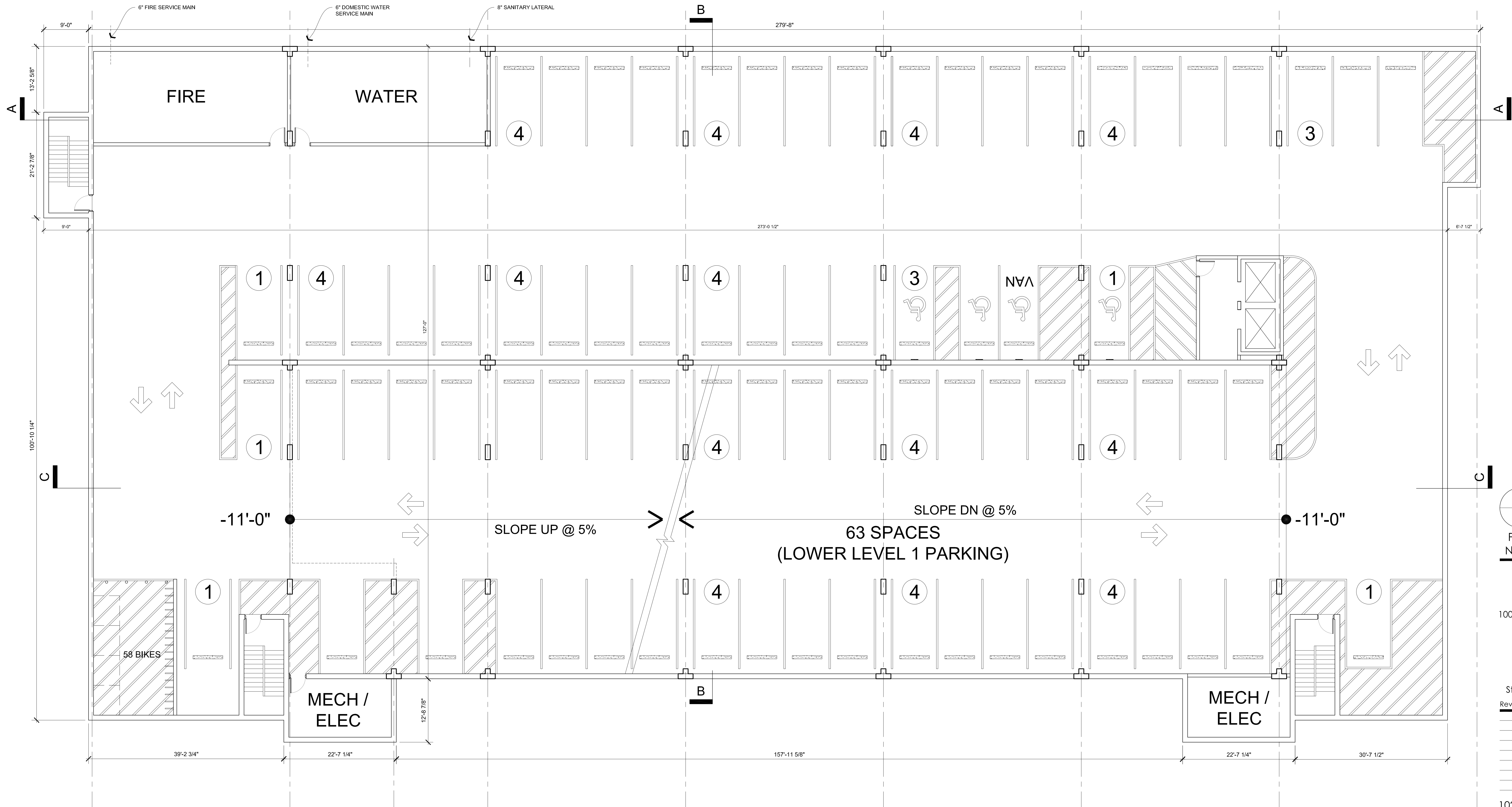
102 North Main Street
Hightstown, NJ 08520
p: 609.448.3888
www.ogp-architects.com



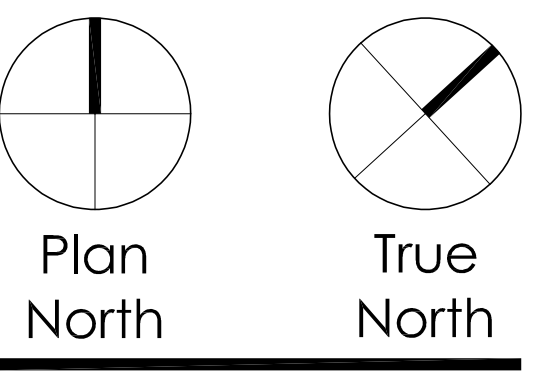
Barry Scott Gordon, AIA, PA: RA 015355B

Project No: 21003 Date: 03/14/2022
Scale: 1/8"=1'-0"

Lower Level 2
Floor Plan



LOWER LEVEL 1 FLOOR PLAN



West College
Mixed Use
Development
1004/1006 W College Ave
State College, PA

Developed By
Highland Holding
Group, Inc.
250 East Beaver Ave.
State College, PA 16801

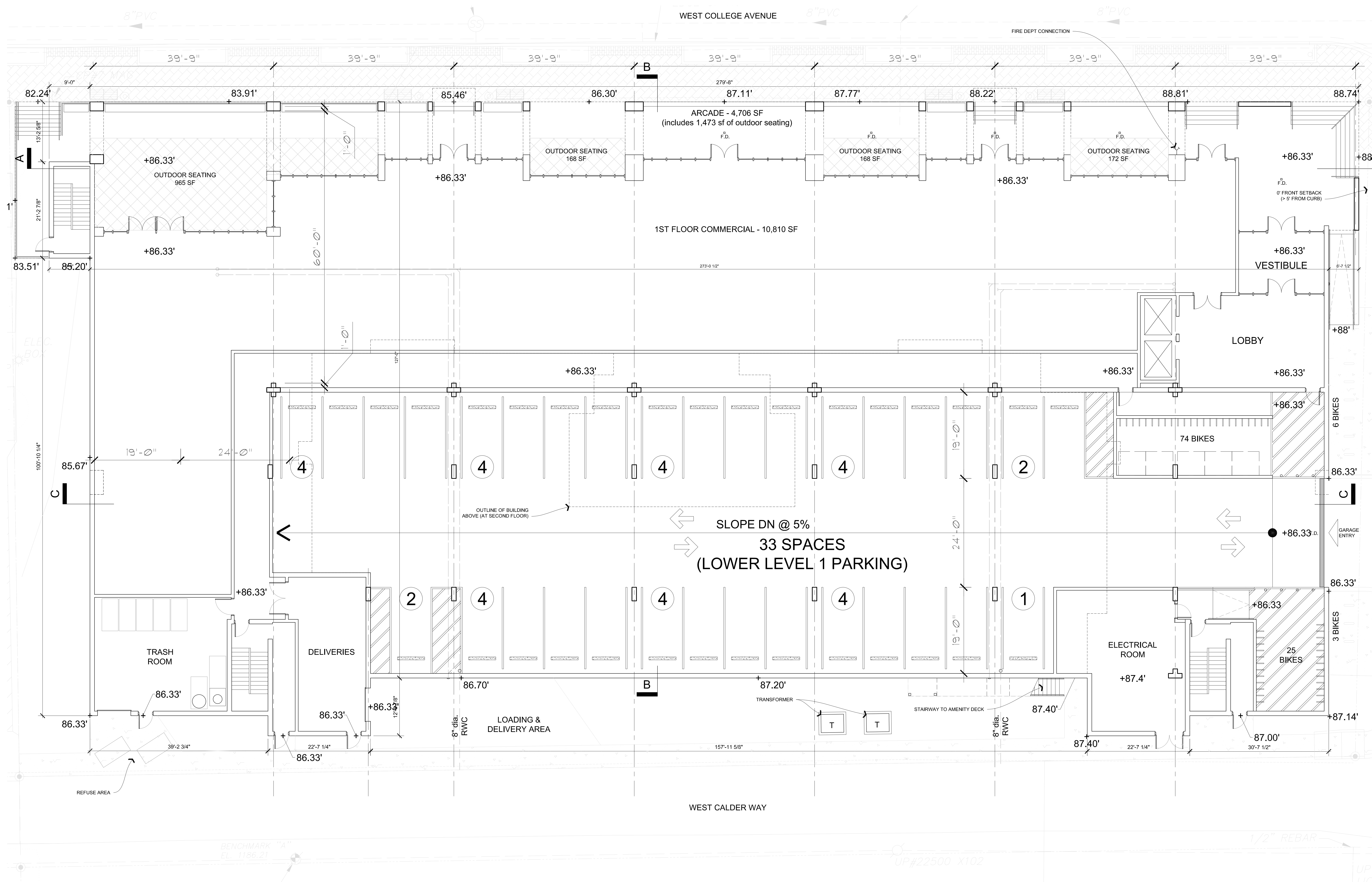
Revision No.	Date

102 North Main Street
Hightstown, NJ 08520
p: 609.448.3888
www.ogp-architects.com

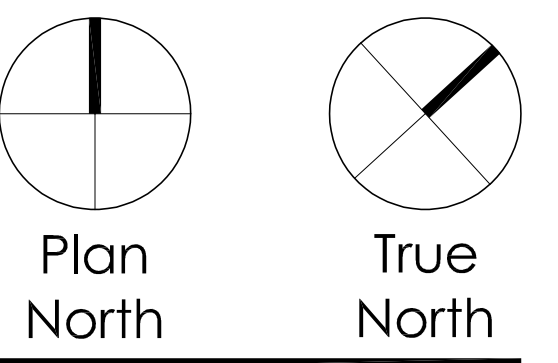


Barry Scott Gordon, AIA PA: RA 015355B
Project No: 21003 Date: 03/14/2022
Scale: 1/8"=1'-0"

Lower Level 1
Floor Plan



LEVEL 1 FLOOR PLAN

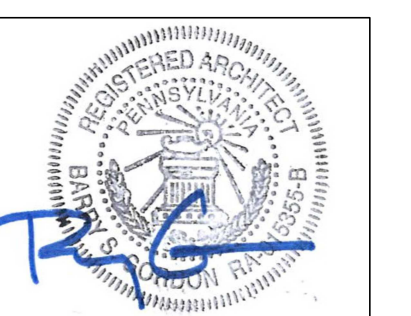


West College
Mixed Use
Development
1004/1006 W College Ave
State College, PA

Developed By
Highland Holding
Group, Inc.
250 East Beaver Ave.
State College, PA 16801

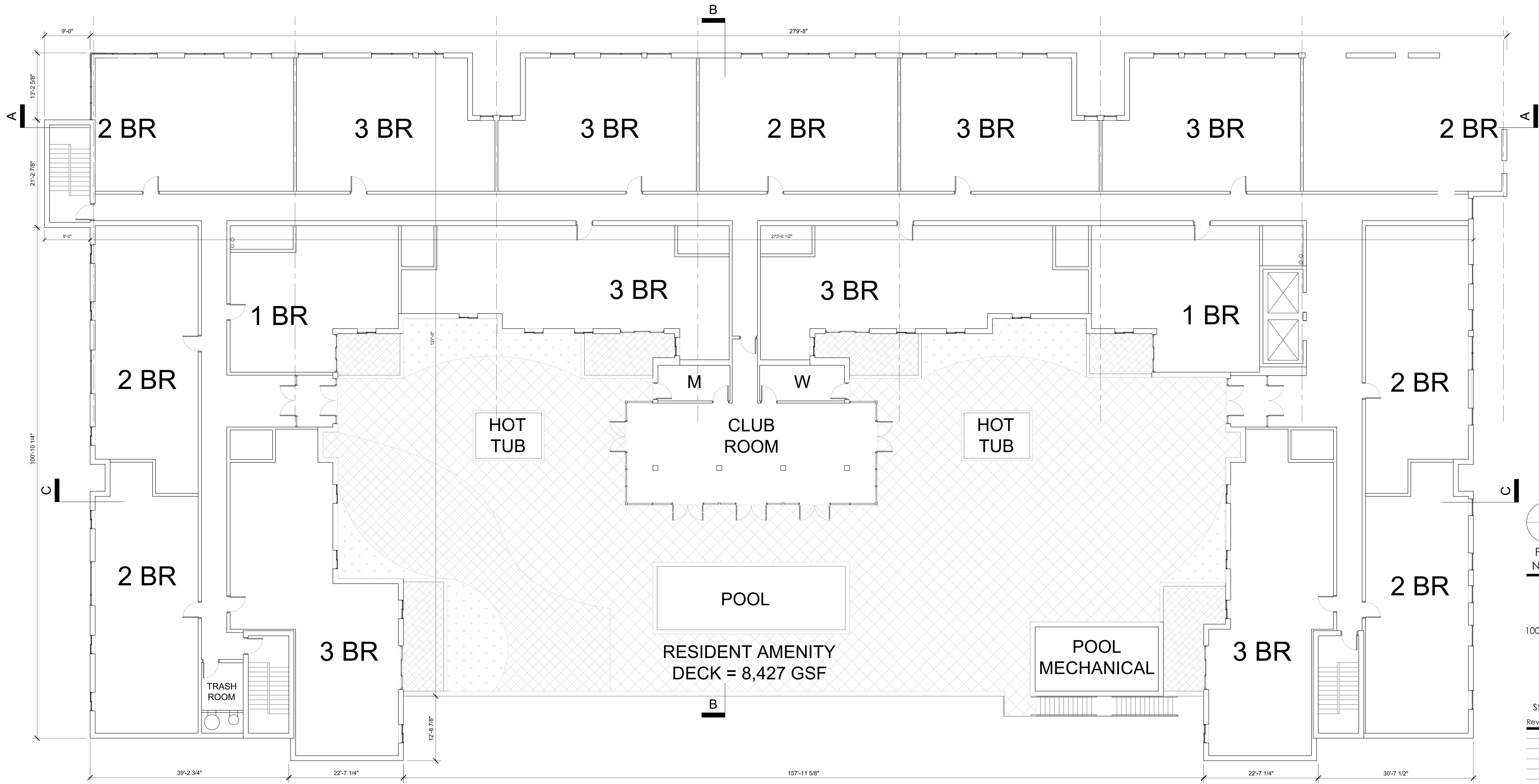
Revision No. _____ Date _____

102 North Main Street
Hightstown, NJ 08520
p: 609.448.3888
www.ogp-architects.com

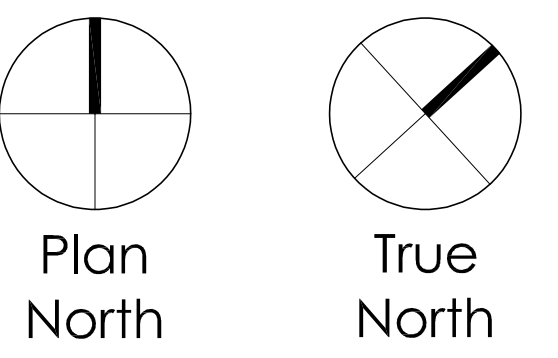


Barry Scott Gordon, AIA, PA: RA 015355B
Project No: 21003 Date: 03/14/2022
Scale: 1/8"=1'-0"

Level 1
Floor Plan



LEVEL 2 FLOOR PLAN

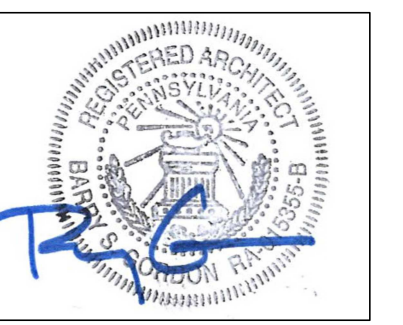


West College
Mixed Use
Development
1004/1006 W College Ave
State College, PA

Developed By
Highland Holding
Group, Inc.
250 East Beaver Ave.
State College, PA 16801

Revision No. Date

102 North Main Street
Hightstown, NJ 08520
p: 609.448.3888
www.ogp-architects.com



Barry Scott Gordon, AIA, PA: RA 015355B

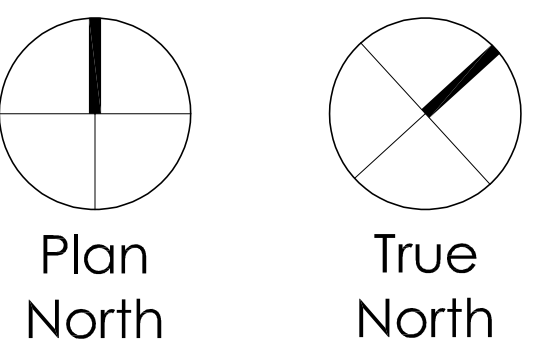
Project No: 21003 Date: 03/14/2022
Scale: 1/8"=1'-0"

Level 2
Floor Plan

CIVIL Engineer
GD&F Engineers
3121 Fairway Drive
Altoona, PA 16602
814.943.5214
Lighting Designer
S & S Lighting Design
19 Crescent Ave.
Summit, NJ 07901
908.578.0460



LEVELS 3-7 FLOOR PLAN

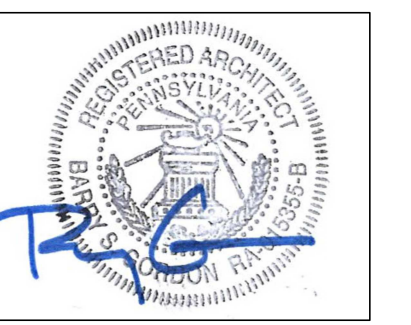


West College
Mixed Use
Development
1004/1006 W College Ave
State College, PA

Developed By
Highland Holding
Group, Inc.
250 East Beaver Ave.
State College, PA 16801

Revision No. Date

102 North Main Street
Hightstown, NJ 08520
p: 609.448.3888
www.ogp-architects.com

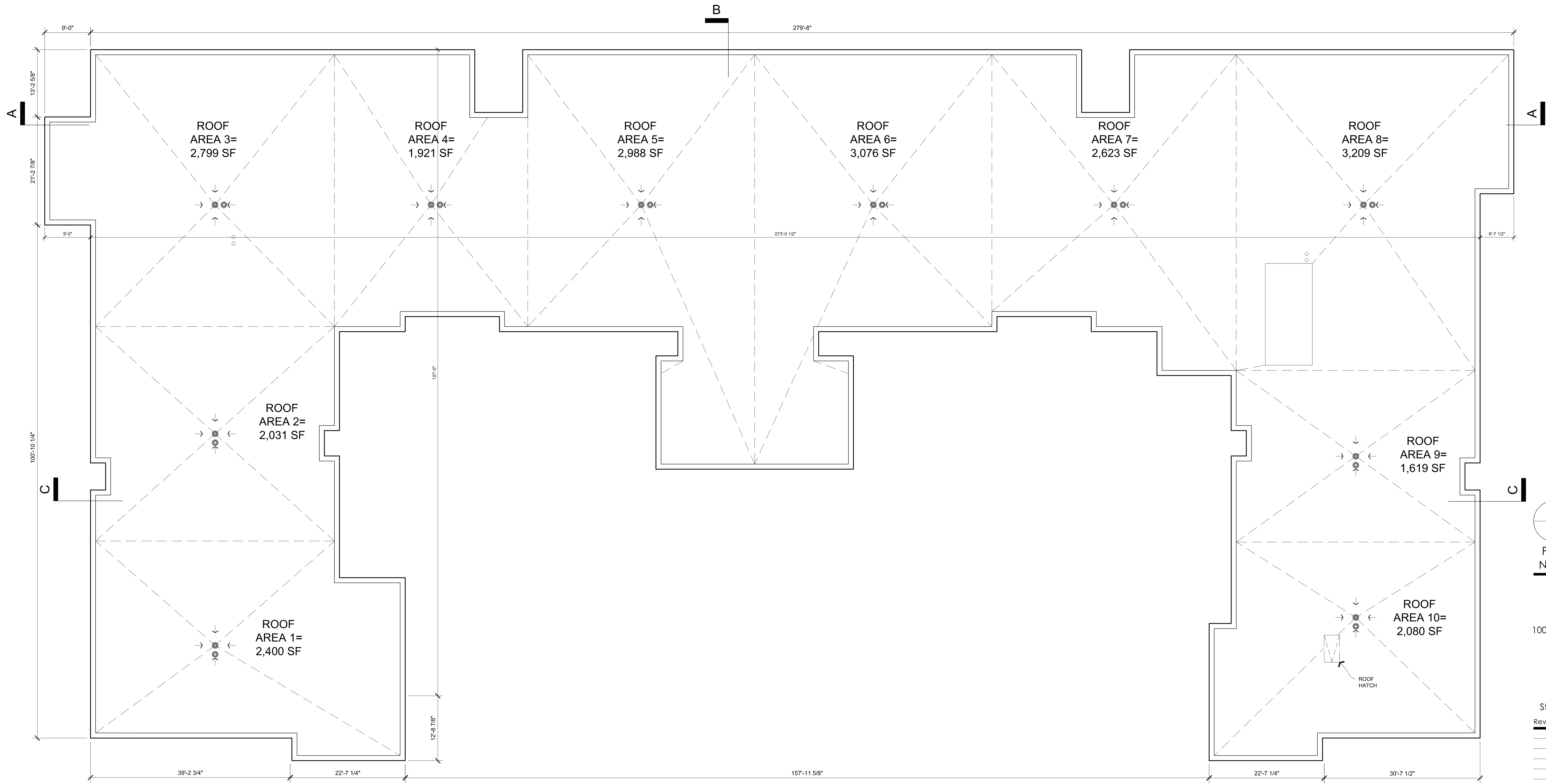


Barry Scott Gordon, AIA, PA: RA 015355B

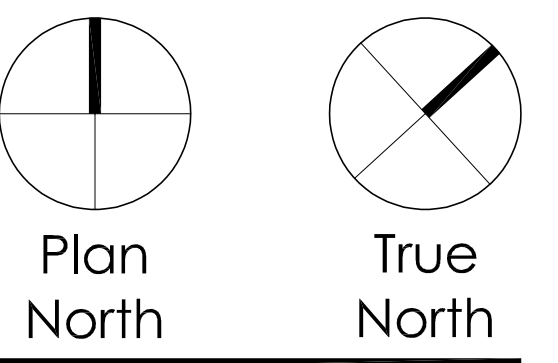
Project No: 21003 Date: 03/14/2022
Scale: 1/8"=1'-0"

Levels 3-7
Floor Plan

CIVIL Engineer
GD&F Engineers
3121 Fairway Drive
Altoona, PA 16602
814.943.5214
Lighting Designer
S & S Lighting Design
19 Crescent Ave.
Summit, NJ 07901
908.578. 0460



ROOF PLAN

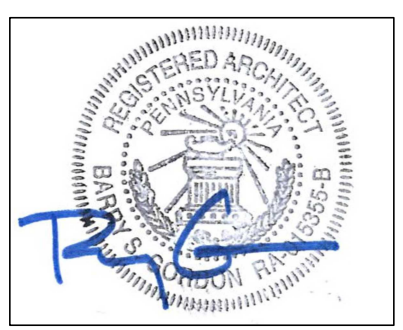


**West College
Mixed Use
Development**
1004/1006 W College Ave
State College, PA

Developed By
**Highland Holding
Group, Inc.**
250 East Beaver Ave.
State College, PA 16801

Revision No.	Date

102 North Main Street
Hightstown, NJ 08520
p: 609.448.3888
www.ogp-architects.com



Barry Scott Gordon, AIA. PA: RA 015355B
Project No: 21003 Date: 03/14/2022
Scale: 1/8"=1'-0"

Roof Plan

FINISH SCHEDULE

TAG	MATERIAL
01	PREFABRICATED FACADE SYSTEM - BLACK
02	AUSTIN LIMESTONE
03	PREFABRICATED FACADE SYSTEM - LIGHT GREY
04	PREFABRICATED FACADE SYSTEM - DARK GREY
05	UTILITY SIZE BRICK - DARK GREY
06	EXTERIOR INSUL. AND FINISH SYSTEM - DARK GREY
07	EXTRUDED MESH - BLACK
08	CONCRETE STAIRS
09	ALUMINUM RAILING - BLACK
10	STEEL CANOPY - BLACK
11	CORTEN STEEL PLANTERS
12	INTEGRATED COLOR CMU - GREY
13	EXTERIOR INSUL. AND FINISH SYSTSEM - LIGHT GREY

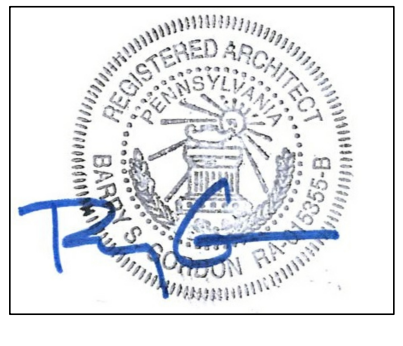


West College Mixed Use Development
1004/1006 W College Ave
State College, PA

Developed By
Highland Holding Group, Inc.
250 East Beaver Ave.
State College, PA 16801

Revision No.	Date

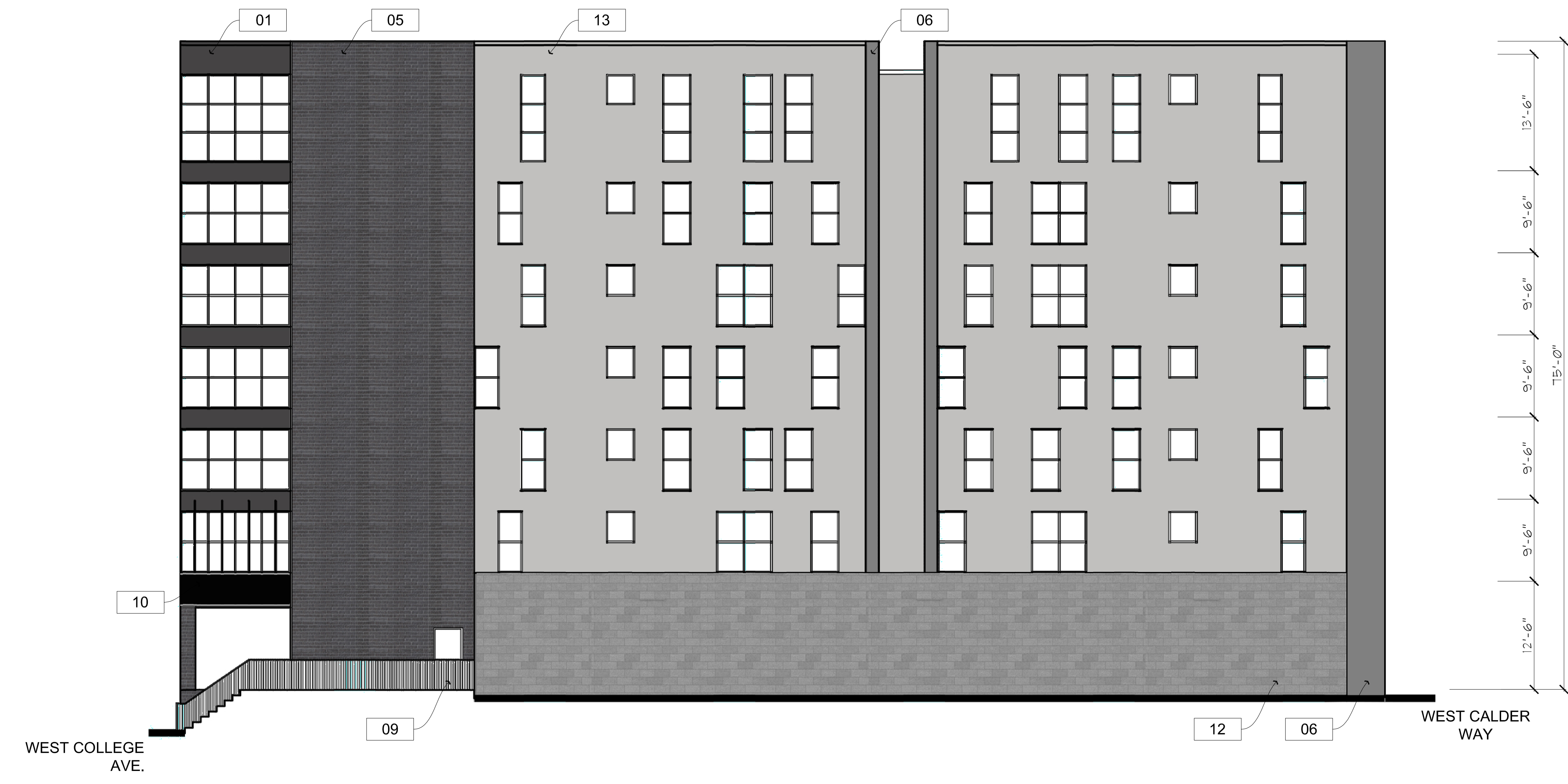
102 North Main Street
Hightstown, NJ 08520
p: 609.448.3888
www.ogp-architects.com



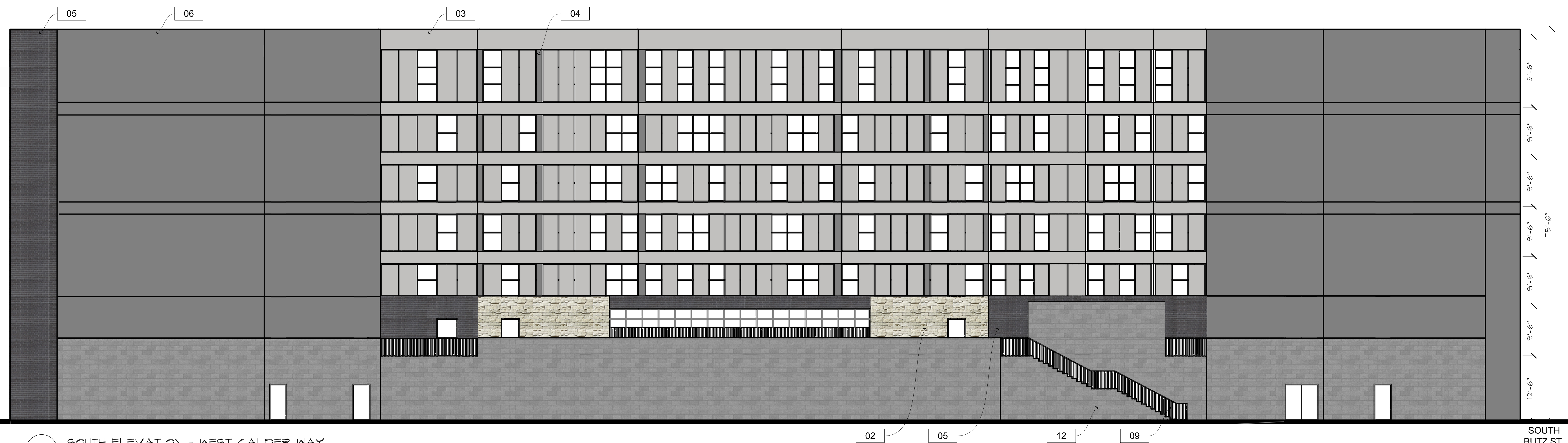
Barry Scott Gordon, AIA, PA: RA 015355B
Project No: 21003 Date: 03/14/2022
Scale: As Noted

Building Elevations

FINISH SCHEDULE	
TAG	MATERIAL
01	PREFABRICATED FACADE SYSTEM - BLACK
02	AUSTIN LIMESTONE
03	PREFABRICATED FACADE SYSTEM - LIGHT GREY
04	PREFABRICATED FACADE SYSTEM - DARK GREY
05	UTILITY SIZE BRICK - DARK GREY
06	EXTERIOR INSUL. AND FINISH SYSTEM - DARK GREY
07	EXTRUDED MESH - BLACK
08	CONCRETE STAIRS
09	ALUMINUM RAILING - BLACK
10	STEEL CANOPY - BLACK
11	CORTEN STEEL PLANTERS
12	INTEGRATED COLOR CMU - GREY
13	EXTERIOR INSUL. AND FINISH SYSTSEM - LIGHT GREY



2 WEST ELEVATION
Scale: 1/8" = 1'-0"



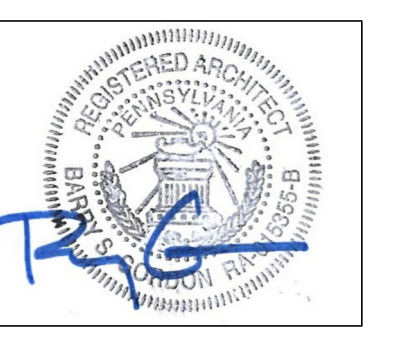
1 SOUTH ELEVATION - WEST CALDER WAY
Scale: 1/8" = 1'-0"

West College Mixed Use Development
1004/1006 W College Ave
State College, PA

Developed By
Highland Holding Group, Inc.
250 East Beaver Ave.
State College, PA 16801

Revision No.	Date

102 North Main Street
Hightstown, NJ 08520
P: 609.448.3888
www.ogp-architects.com



Barry Scott Gordon, AIA PA: RA 0153558
Project No: 21003 Date: 03/14/2022
Scale: As Noted

Building Elevations



CIVIL Engineer
GD&F Engineers
3121 Fairway Drive
Altoona, PA 16602
814.943.5214

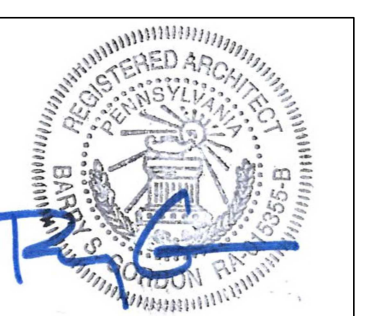
Lighting Designer
S & S Lighting Design
19 Crescent Ave.
Summit, NJ 07901
908.578. 0460

**West College
Mixed Use
Development**
1004/1006 W College Ave
State College, PA

Developed By
Highland Holding
Group, Inc.
250 East Beaver Ave.
State College, PA 16801

Revision No. Date

102 North Main Street
Hightstown, NJ 08520
p: 609.448.3888
www.ogp-architects.com



Barry Scott Gordon, AIA, PA, RA 015355B

Project No: 21003 Date: 03/14/2022
Scale: NTS

Rendering



CIVIL Engineer
GD&F Engineers
3121 Fairway Drive
Altoona, PA 16602
814.943.5214

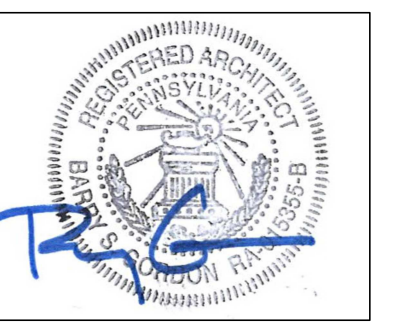
Lighting Designer
S & S Lighting Design
19 Crescent Ave.
Summit, NJ 07901
908.578.0460

**West College
Mixed Use
Development**
1004/1006 W College Ave
State College, PA

Developed By
**Highland Holding
Group, Inc.**
250 East Beaver Ave.
State College, PA 16801

Revision No. _____ Date _____

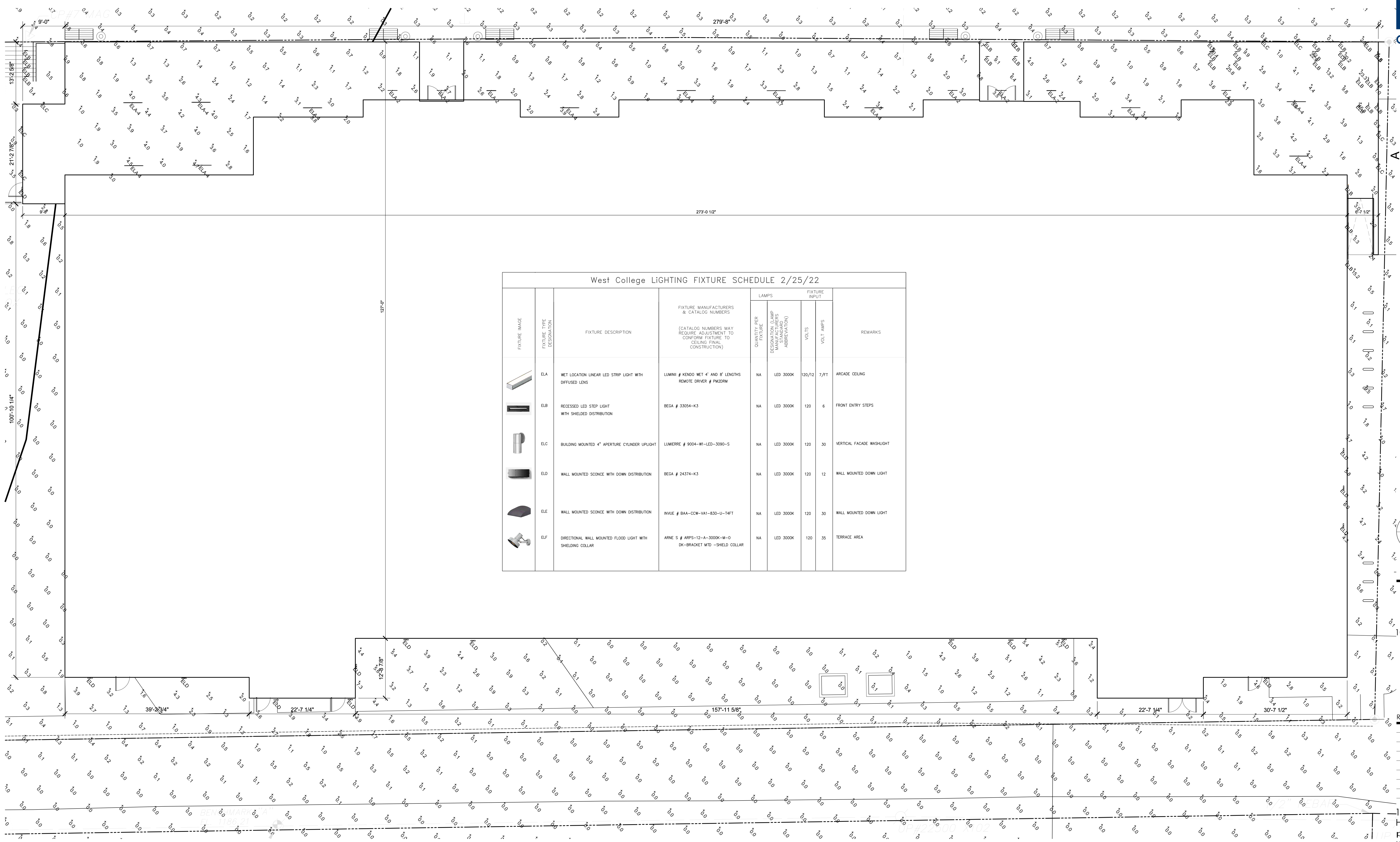
102 North Main Street
Hightstown, NJ 08520
p: 609.448.3888
www.ogp-architects.com



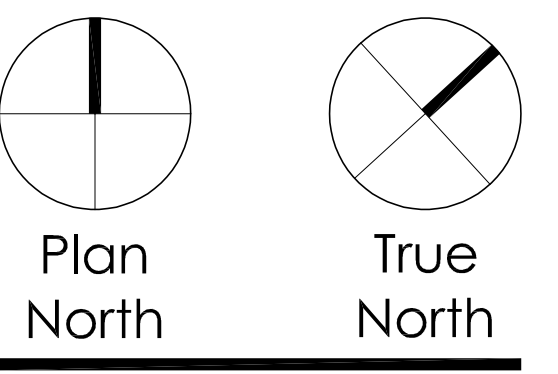
Barry Scott Gordon, AIA, PA: RA 015358

Project No: 21003 Date: 03/14/2022
Scale: NTS

Renderings



West College LIGHTING FIXTURE SCHEDULE 2/25/22							
FIXTURE IMAGE	FIXTURE DESIGNATION	FIXTURE DESCRIPTION	FIXTURE MANUFACTURERS & CATALOG NUMBERS (CATALOG NUMBERS MAY REQUIRE ADJUSTMENT TO CONFORM FIXTURE TO CEILING FINAL CONSTRUCTION)	LAMPS			REMARKS
				QUANTITY PER FIXTURE	DESCRIPTION (LAMP MANUFACTURERS MANUFACTURERS ABBREVIATION)	FIXTURE INPUT VOLTS VOLT AMPS	
	ELA	WET LOCATION LINEAR LED STRIP LIGHT WITH DIFFUSED LENS	LUMINI # KENDO WET 4' AND 8' LENGTHS REMOTE DRIVER # PMZDRM	NA	LED 3000K	120/12 7/FT	ARCADE CEILING
	ELB	RECESSED LED STEP LIGHT WITH SHIELDED DISTRIBUTION	BEGA # 33054-K3	NA	LED 3000K	120 6	FRONT ENTRY STEPS
	ELC	BUILDING MOUNTED 4" APERTURE CYLINDER UPLIGHT	LUMIERE # 9004-WI-LED-3090-S	NA	LED 3000K	120 30	VERTICAL FACADE WASHLIGHT
	ELD	WALL MOUNTED SCIENCE WITH DOWN DISTRIBUTION	BEGA # 24374-K3	NA	LED 3000K	120 12	WALL MOUNTED DOWN LIGHT
	ELE	WALL MOUNTED SCIENCE WITH DOWN DISTRIBUTION	INVUE # BAA-COW-VAI-830-U-TAFT	NA	LED 3000K	120 30	WALL MOUNTED DOWN LIGHT
	ELF	DIRECTIONAL WALL MOUNTED FLOOD LIGHT WITH SHIELDING COLLAR	ARNE S # ARPS-12-A-3000K-M-0 DK-BRACKET MTD -SHIELD COLLAR	NA	LED 3000K	120 35	TERRACE AREA

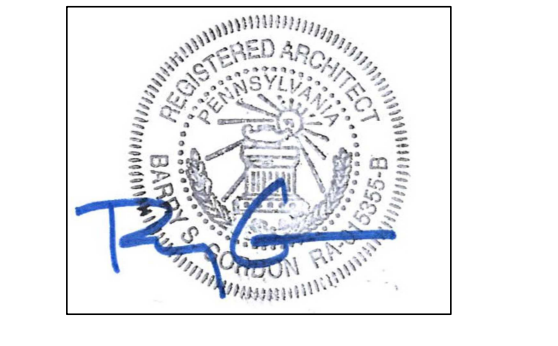


West College
Mixed Use
Development
1004/1006 W College Ave
State College, PA

Developed By
Highland Holding
Group, Inc.
250 East Beaver Ave.
State College, PA 16801

Revision No.	Date

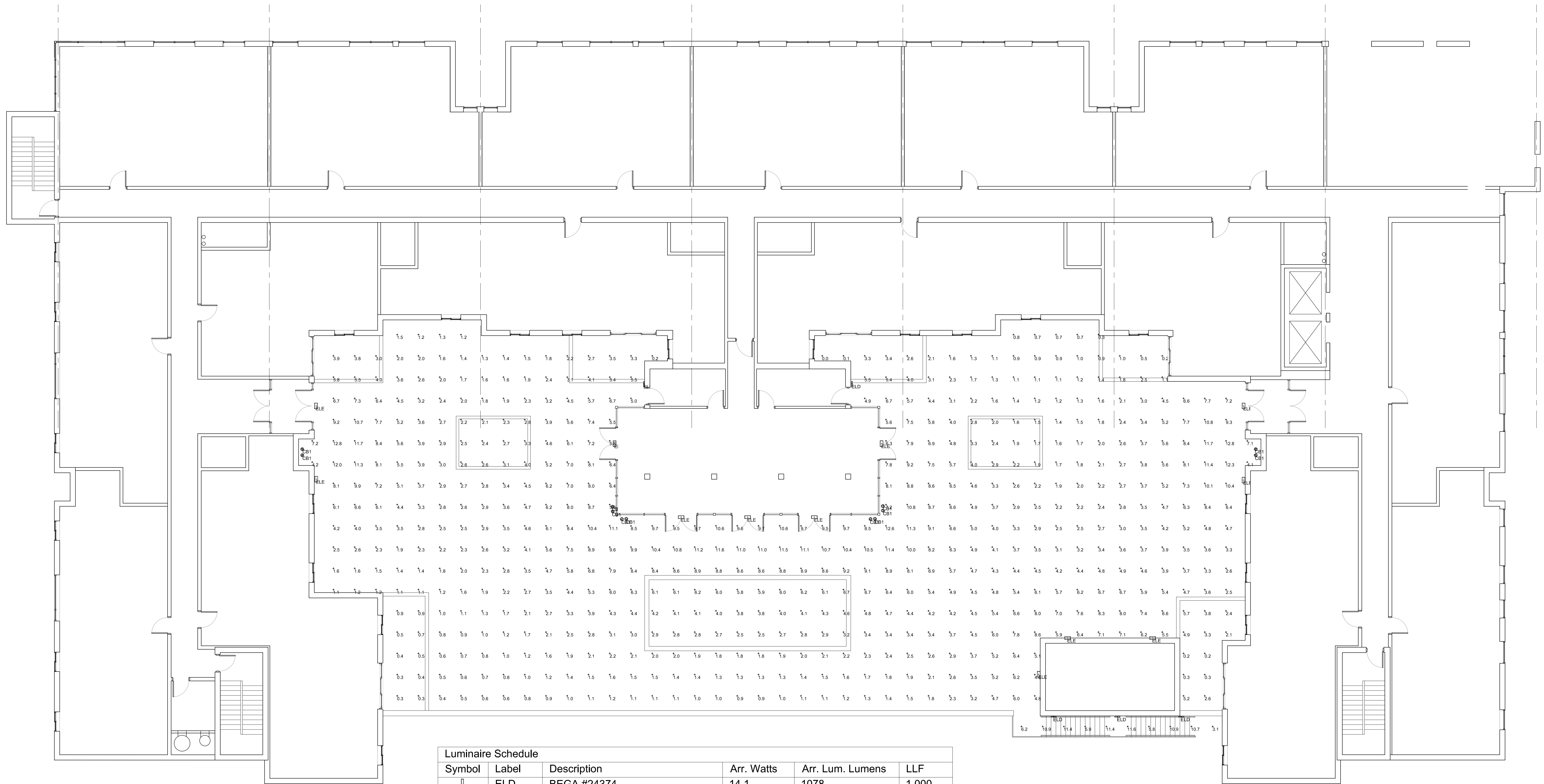
102 North Main Street
Hightstown, NJ 08520
P: 609.448.3888
www.ogp-architects.com



Project No: 21003 Date: 03/14/2022
Scale: 1/8"=1'-0"

SITE LIGHTING PLAN

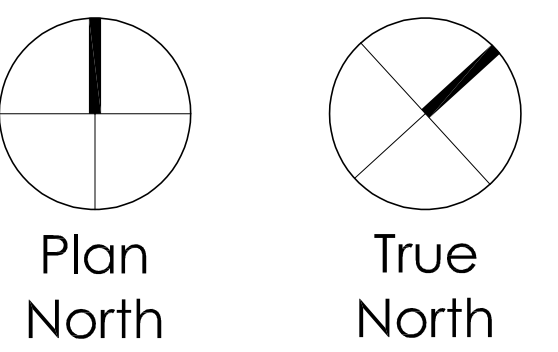
Site Lighting Plan



Luminaire Schedule					
Symbol	Label	Description	Arr. Watts	Arr. Lum. Lumens	LLF
⏏	ELD	BEGA #24374	14.1	1078	1.000
⊕	CB1	ARPS-C-B-1-WF	20	2234	1.000
⏏	ELE	INVUE #CCW-VA-1-830-U-T4FT	30.3	3032	1.000

Calculation Summary							
Label	CalcType	Units	Avg	Max	Min	Avg/Min	Max/Min
Deck	Illuminance	Fc	4.2	12.8	0.0	N.A.	N.A.
Pool Deck Stairs	Illuminance	Fc	8.8	11.6	3.1	2.8	3.7

NOTES:
1) FIXTURES ARE CALCULATED AT "INITIAL" FC LEVELS. LIGHT LEVELS WILL SLOWLY DECREASE OVER TIME IN ACCORDANCE WITH TM-21 AND L70 DATA PUBLISHED ON FIXTURE CUTSHEET.
2) FIXTURES ARE DIMMABLE WITH 0-10V CONTROLS.

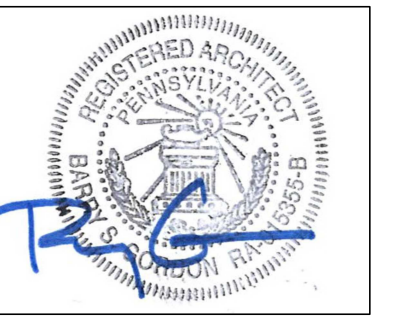


West College
Mixed Use
Development
1004/1006 W College Ave
State College, PA

Developed By
Highland Holding
Group, Inc.
250 East Beaver Ave.
State College, PA 16801

Revision No.	Date

102 North Main Street
Hightstown, NJ 08520
p: 609.448.3888
www.ogp-architects.com



Barry Scott Gordon, AIA, PA, RA 015355B
Project No: 21003 Date: 03/14/2022
Scale: 1/8"=1'-0"

POOL DECK LIGHTING PLAN

Pool Deck
Lighting

SL2