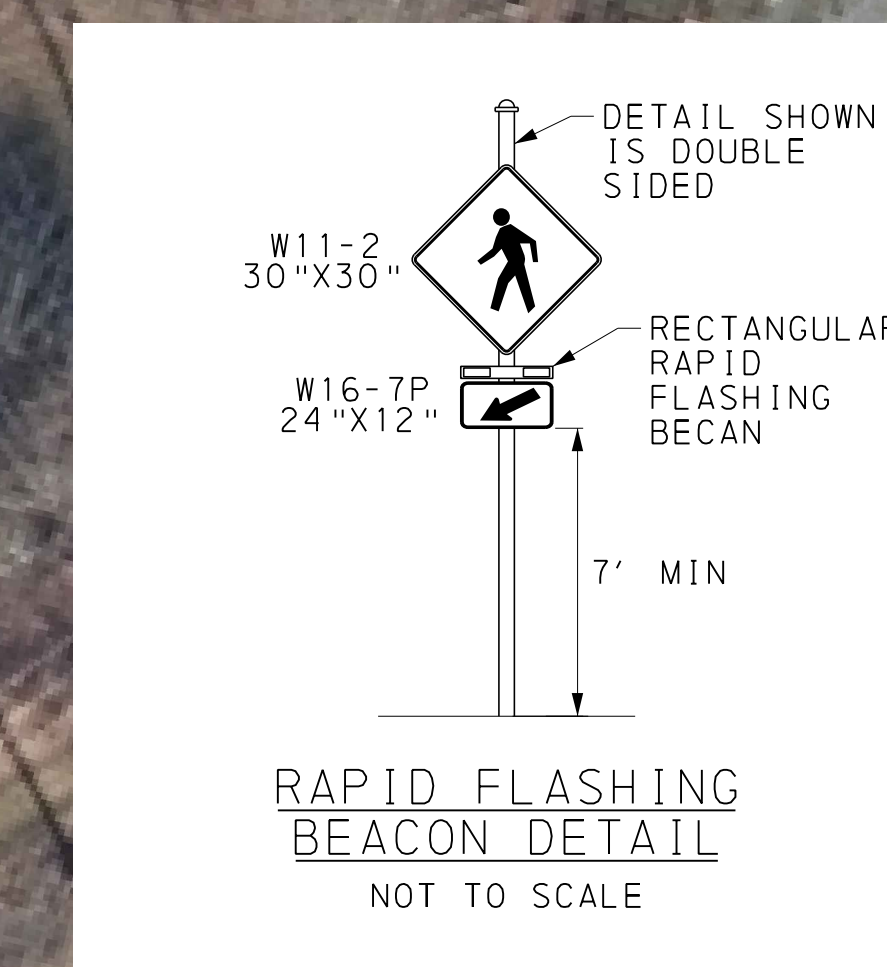
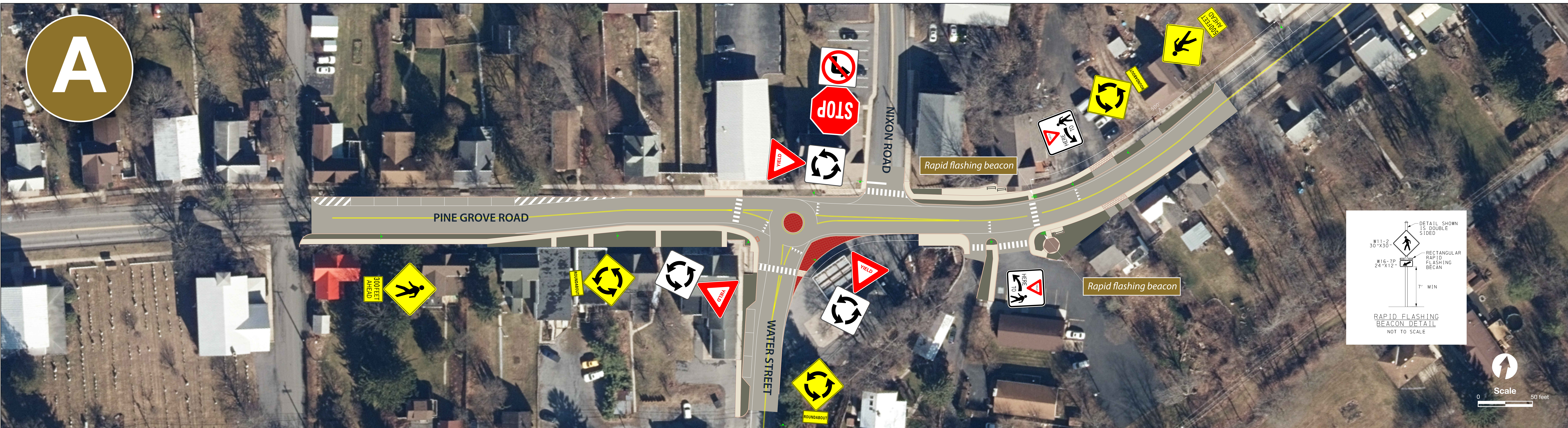
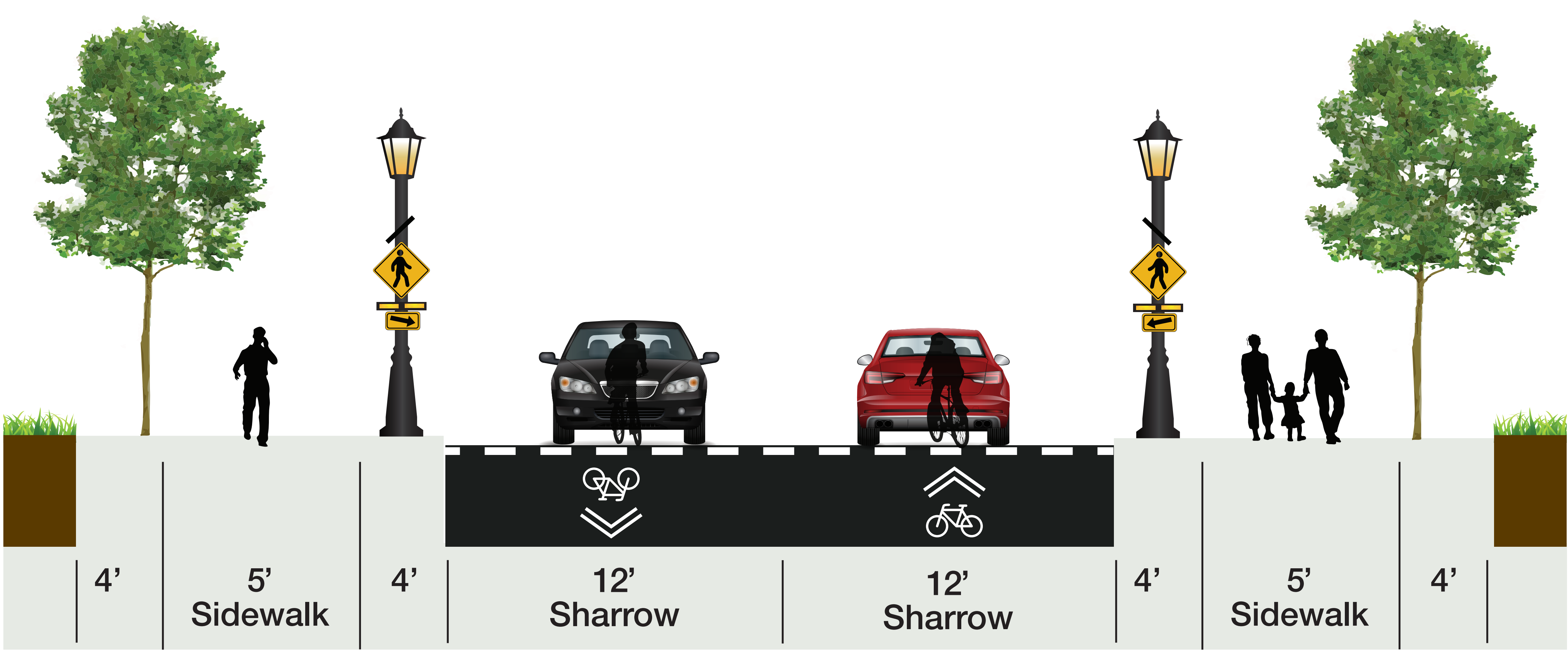




A



Pine Grove Road Cross-Section with Enhanced Pedestrian Crossing



Description

- Convert intersection to a small “mini-roundabout”.
- Add high-visibility crosswalks with overhead lighting at the roundabout, Nixon Road, St. Elmo’s Lane, and Post Office Driveway.
- Add enhanced pedestrian crossing of Pine Grove Road with rapid flashing beacons, high-visibility pavement markings, and overhead lighting in front of the Post Office.
- Narrow the travel lanes on Pine Grove Road and use the extra space for sidewalk, buffers, and community space.
- Turn Water Street into the intersection and use the extra space on the west side for sidewalk, buffers, and parking.

Benefits

- Gains motorist attention and promote compliance with “Yield to Pedestrian” rules by providing pedestrian crosswalks at enhanced and high-visibility crossings.
- Emphasizes a human scale, low-speed environment within the heart of Pine Grove Mills through roundabout, street design, signage, and pavement markings.
- Water Street alignment is better suited for truck turning and puts pedestrians more directly in front of drivers.
- Allows Nixon Road drivers to turn right and use the roundabout for “U-turns” to travel east toward State College/Boalsburg.

Challenges

- Roundabout control introduces new delay to vehicles on Pine Grove Road.
- Turn restrictions would still be required on Nixon Road.
- Pedestrian crossings at the roundabout would not be equipped with rapid flashing beacons.
- Design complications related to Pine Grove Country Store access, pedestrian pathways, and bridge structure over Slab Cabin Run.
- Because of the small roundabout size, the center island is not raised. Smaller vehicles may enter the roundabout without slowing.