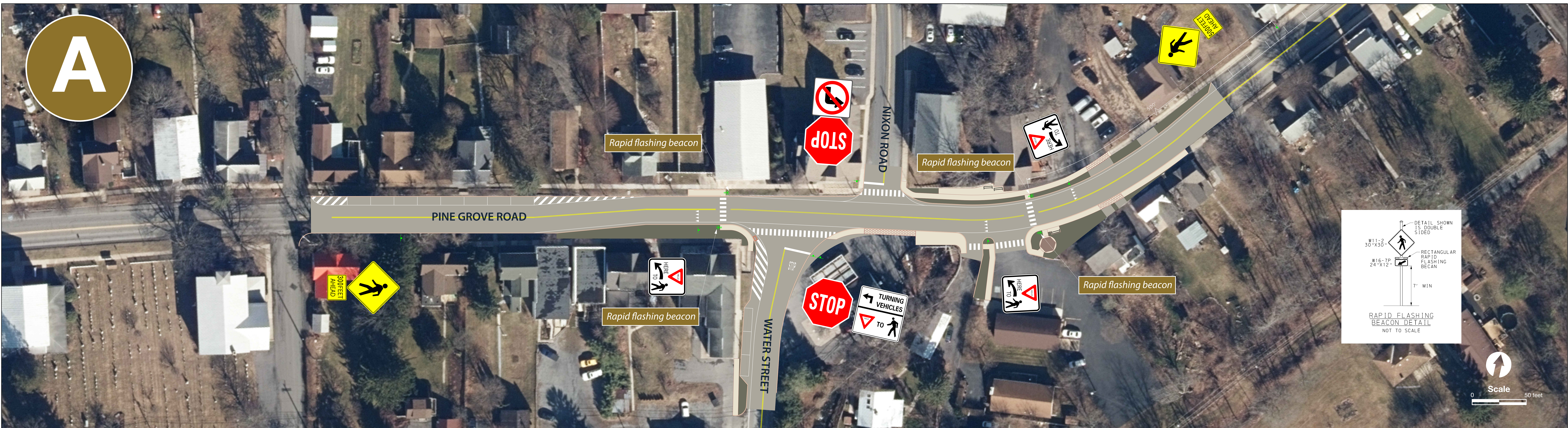
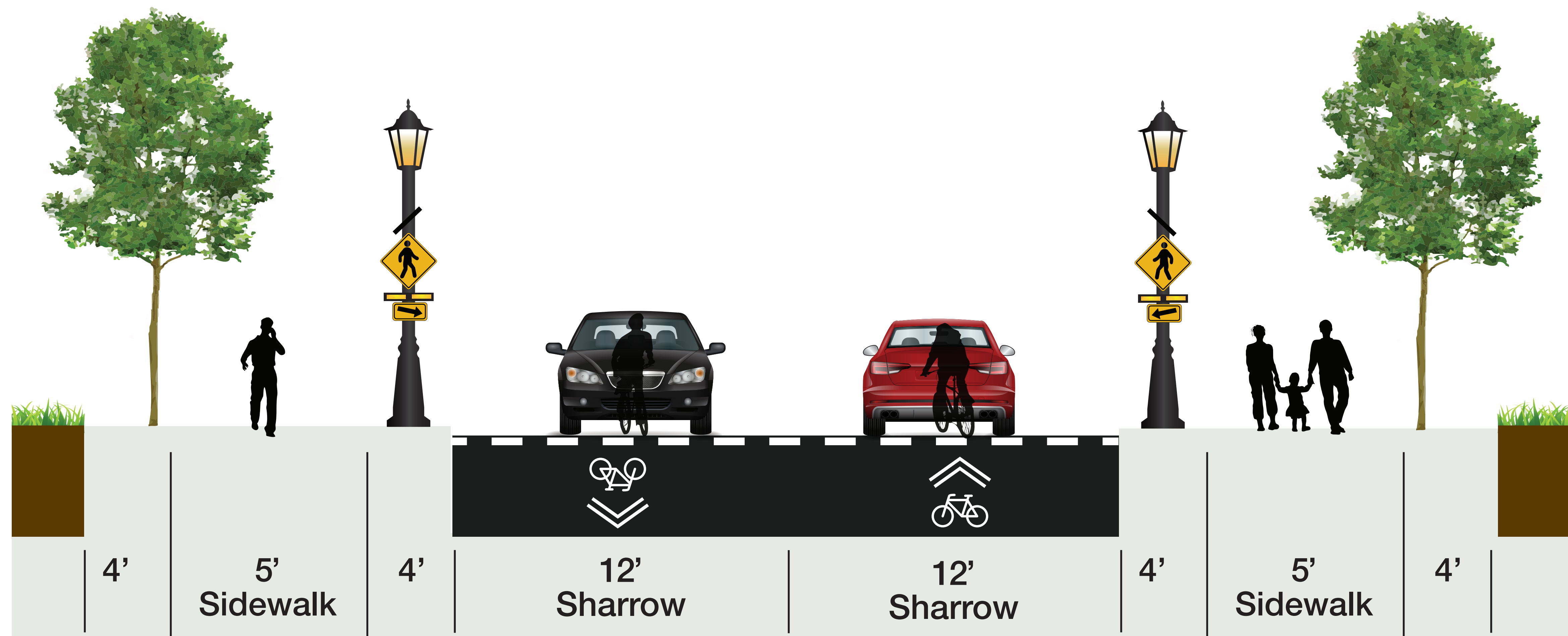




A



**Pine Grove Road Cross-Section with Enhanced Pedestrian Crossing**



**Description**

- Add two enhanced pedestrian crossings of Pine Grove Road with rapid flashing beacons, high-visibility pavement markings, and overhead lighting.
- Add high-visibility crosswalks with overhead lighting across Water Street, Nixon Road, St. Elmo's Lane, and Post Office Driveway.
- Narrow the travel lanes on Pine Grove Road and use the extra space for sidewalk, buffers, and community space.
- Turn Water Street into the intersection and use the extra space on the west side for sidewalk, buffers, and parking.

**Benefits**

- Gains motorist attention and promote compliance with "Yield to Pedestrian" rules by providing pedestrian crosswalks at enhanced and high-visibility crossings.
- Emphasizes a human scale, low-speed environment within the heart of Pine Grove Mills through street design, signage, and pavement markings.
- Water Street alignment is better suited for truck turning and puts pedestrians more directly in front of drivers.
- Stop sign control is well understood by drivers and in context with the small-town environment.
- Introduces minimal new delay on Pine Grove Road.

**Challenges**

- Vehicles on Pine Grove Road do not stop or yield at intersections, and speeds may remain higher than desired.
- Turn restrictions would still be required on Nixon Road.
- Long pedestrian crossing distance across Water Street.
- Design complications related to Pine Grove Country Store access and bridge structure over Slab Cabin Run.