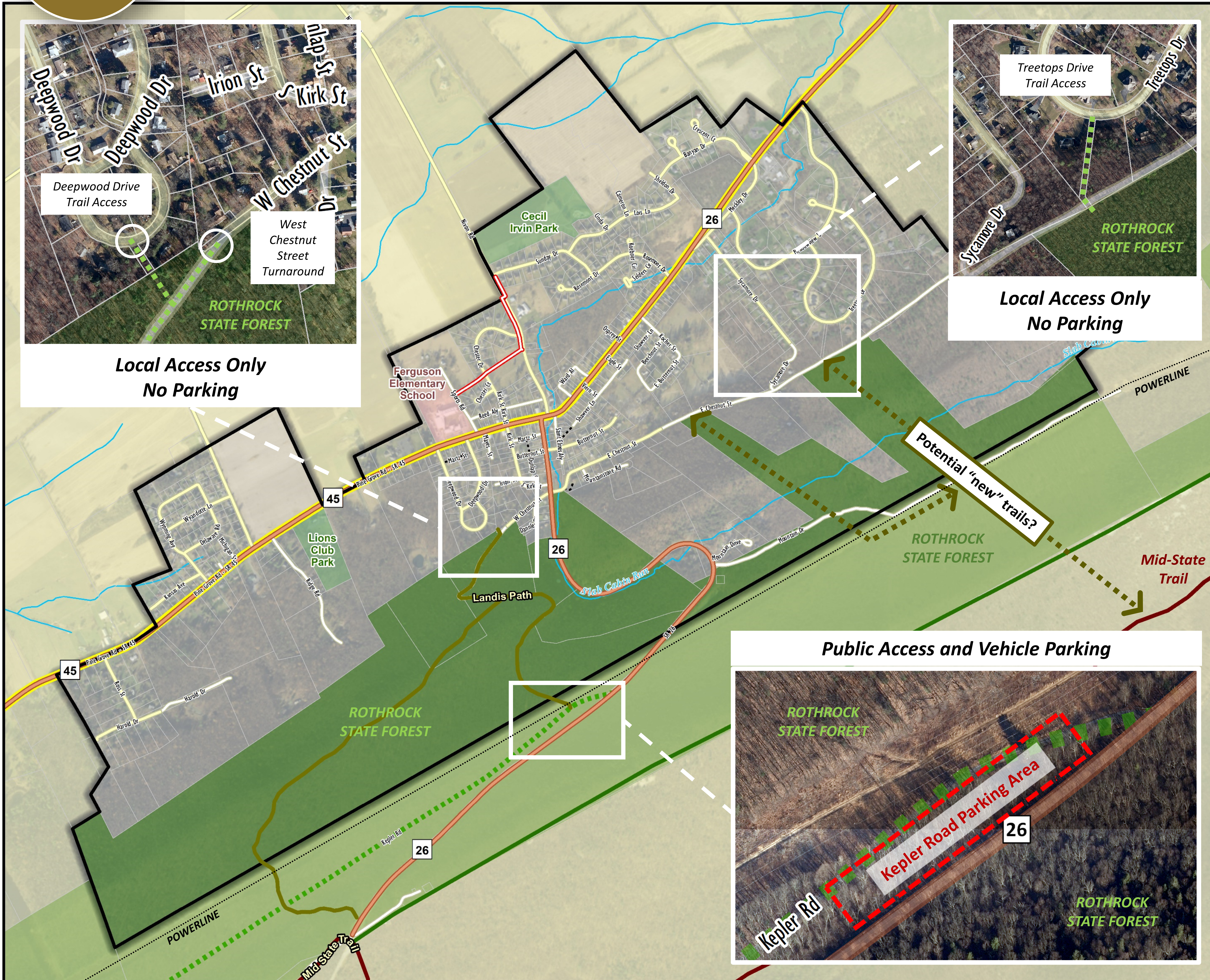




### Background:

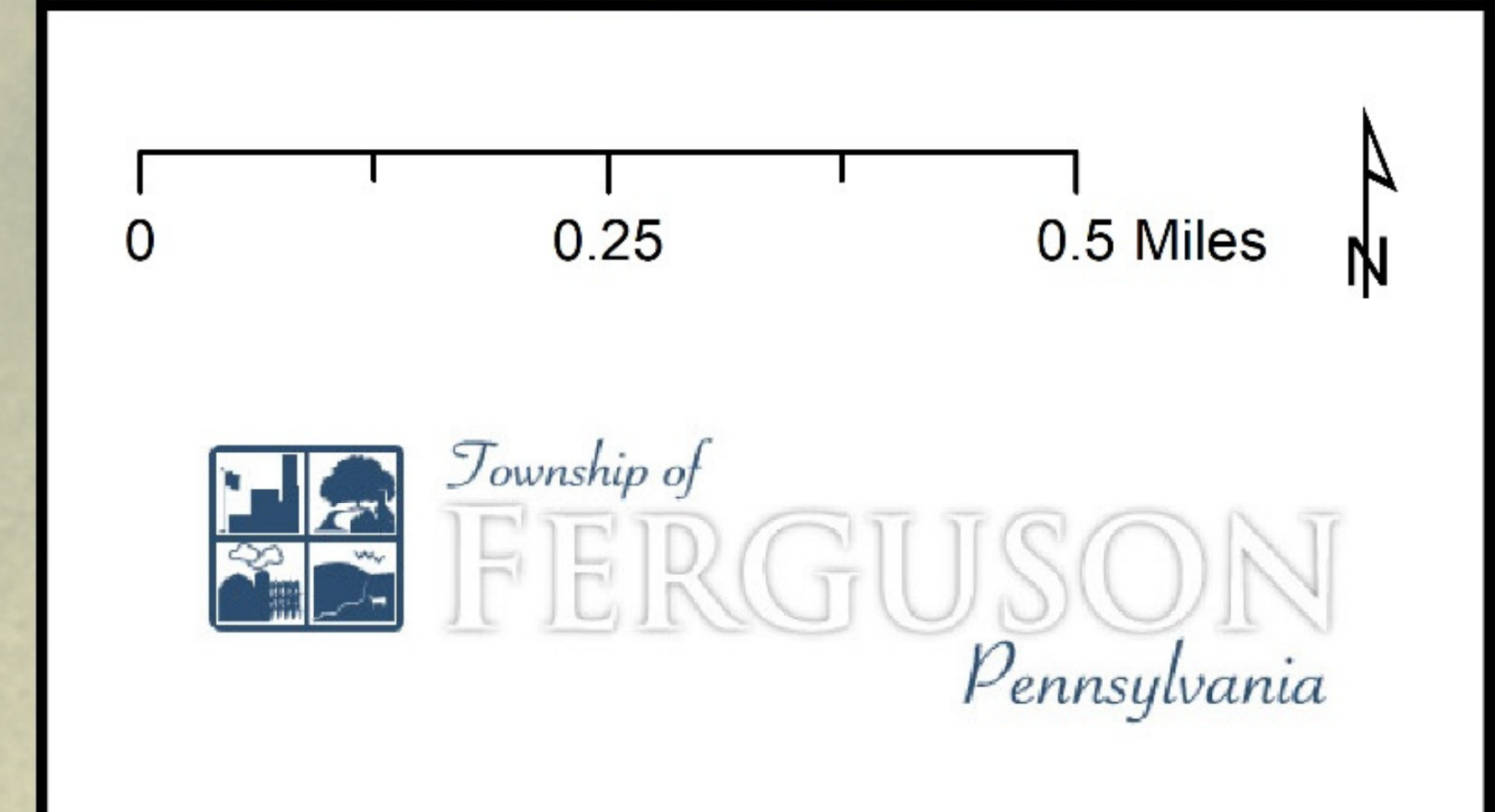
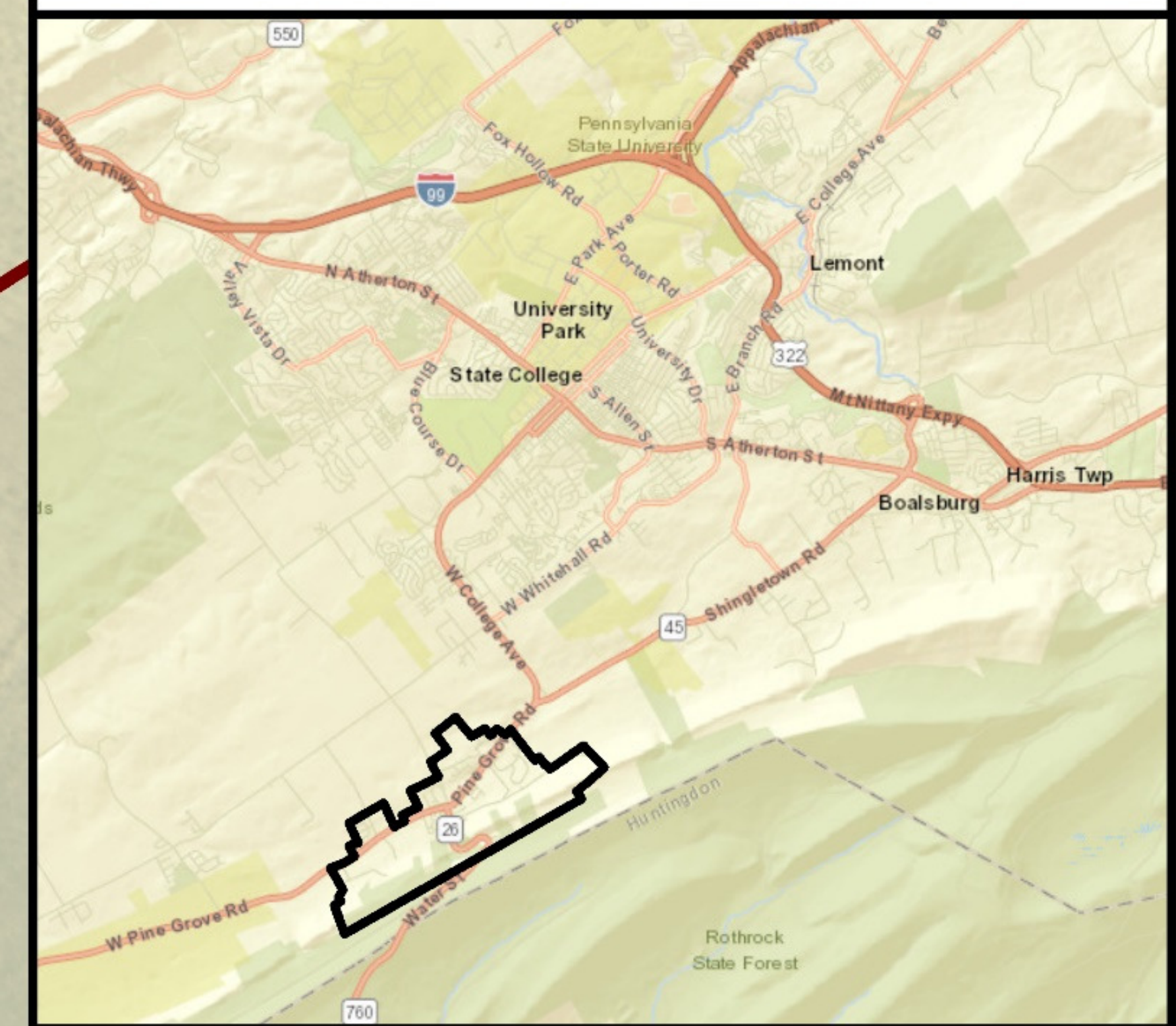
The Small Area Plan recognized opportunities for improved access and connectivity between Pine Grove Mills and the Rothrock State Forest trails. The Mobility Study echoes the recommendations of the Small Area Plan.



## Ferguson Township PINE GROVE MILLS MOBILITY STUDY

Trails & State Forest Access

- Study Area Boundary
- Shared Use Path
- PA Bike Route G
- Mid-State Trail
- Hiking Only
- Rothrock Shared-Use Trail
- School
- Park
- Rothrock State Forest



### General Recommendations:

- Encourage walking or bike access only via the neighborhood trail connections.
- Work with neighborhoods to develop acceptable trailhead signage and access restrictions (residents only, walk only, walk and bike, motorized traffic, horses, etc.)
- Encourage vehicular access and parking at the Kepler Road access, to the south along Water Street.

### Locational Recommendations:

- **At the Deepwood Drive Trail Access:**
  - Connection for local resident/neighborhood access.
- **At the Treetops Drive Trail Access:**
  - Connection for local resident/neighborhood access.
- **At the end of West Chestnut Street Turnaround:**
  - Clearly sign and define the trail access point.
  - Post a trail map and trail head signage, indicating access restrictions.
  - Update the parking ordinance for No Parking and post No Parking signs.
  - Assess the ownership and need for the existing gate, and if no vehicular access is desired, consider removing the gate.
  - Create a berm to stabilize the embankment, define the turn-around area, and capture storm water to prevent erosion.
  - Consider adding bike parking (rack).
- **At the Kepler Road Access:**
  - Work with DCNR and State Forest to assess ownership and right-of-way of the area currently being used as parking.
  - Based on the outcomes of ownership/responsibility, post parking regulations for the area, including hours and any limitations on parking (campers, RVs, etc.).
  - Conduct a parking and trail utilization study, including a survey of trail users to determine desired trailhead improvements.
  - Post a trail map and trail head signage, indicating access restrictions.
  - Consider adding bike parking (rack).