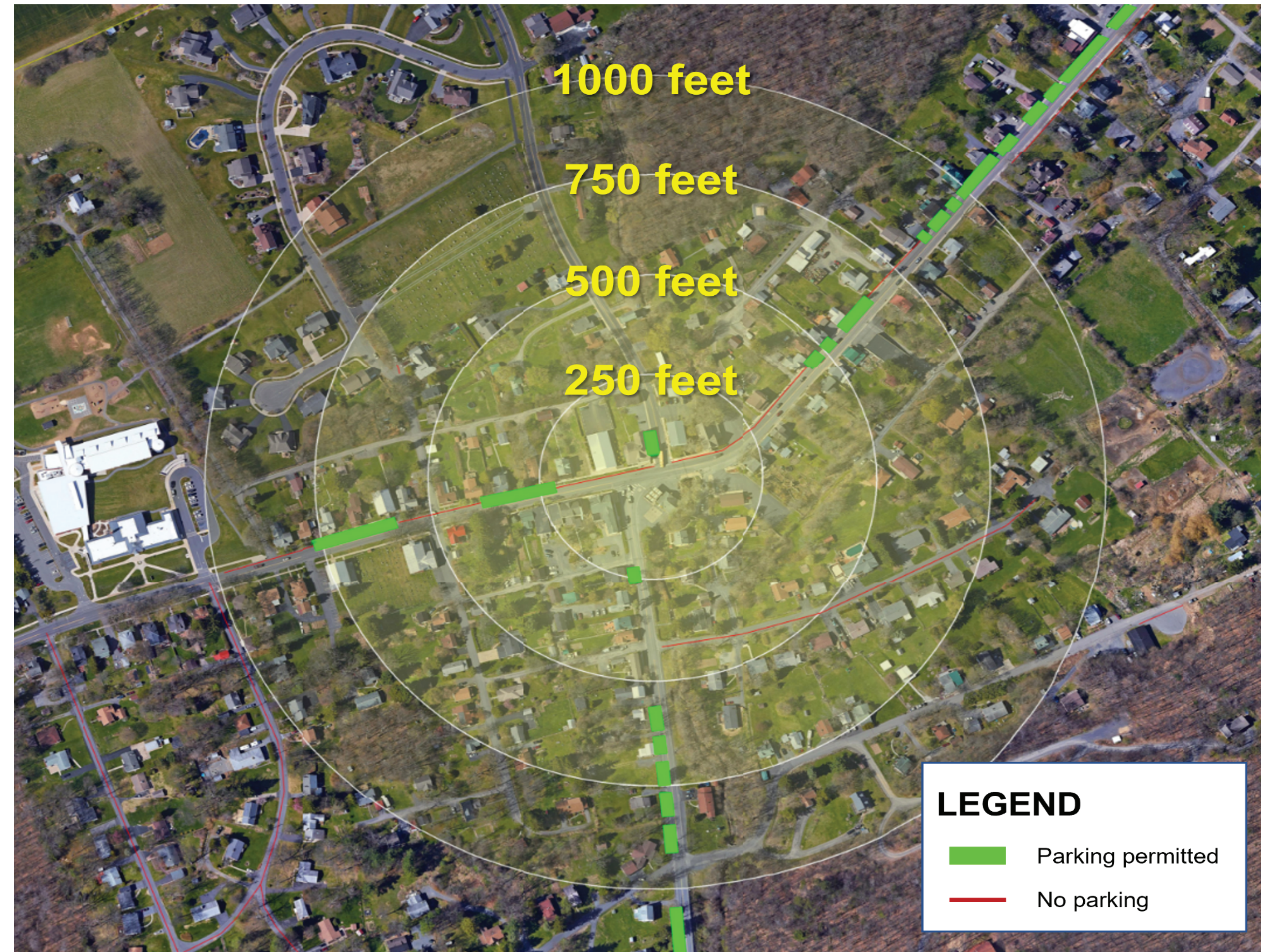




P Existing & Potential Parking by Radius



On-Street Parking Space Supply	Radius from Intersection of Pine Grove Road & Water Street			
	250 ft	500 ft	750 ft	1000 ft
Existing Supply	6	14	32	43
Concepts that Add Parking				
Reimagine Concept	+3	+5	+5	+5
Water Street Streetscape	+3	+4	+4	+4
Other Parking Actions	+1	+2	+3	+3
Potential Increase	+7	+11	+12	+12
	+117%	+79%	+38%	+28%
Potential Supply	13	25	44	55

Background:

The Small Area Plan identified the need for marking existing parking spaces and increasing the supply of public parking for use by existing and future/potential businesses. The Mobility Study evaluated utilization of the existing parking and provided a series of parking improvement, policy, and ordinance recommendations.

Study Findings:

- Identified a total on-street parking supply of 88 regular and 2 handicap spaces.
- Parking utilization was highest (20 spaces, 25% of supply) during the overnight hours, indicating that parking is a resource for residents of Pine Grove Mills.
- Parking spaces between the Elementary School and Viero Street were the most utilized (50-60% overnight).
- Identified potential new parking within a radius of the Pine Grove Road/Water Street intersection.
 - o Concepts and recommendations could add approximately 7 new spaces within 250 feet of the Pine Grove Road/Water Street intersection and 4 more within 500 feet.
 - o 80% increase in parking spaces within 500 feet of the intersection.

Recommendations:

- Mark existing parking spaces on Pine Grove Road.
- Integrate new and revised parking into concepts.
- Expand parking zones on Pine Grove Road where sight distance allows.
- Incorporate verge/indented parking along Water Street.
- Standardize the parking signage scheme in Pine Grove Mills.
- Coordinate ordinance and field postings for parking.
- Update parking ordinance to remove Sunday parking on the south side of Pine Grove Road.



Verge and Indented Parking

Source: Queensland Department of Transport and Main Roads, Technical Note 138, Verge Parking and Indented Parking, January 2015.

