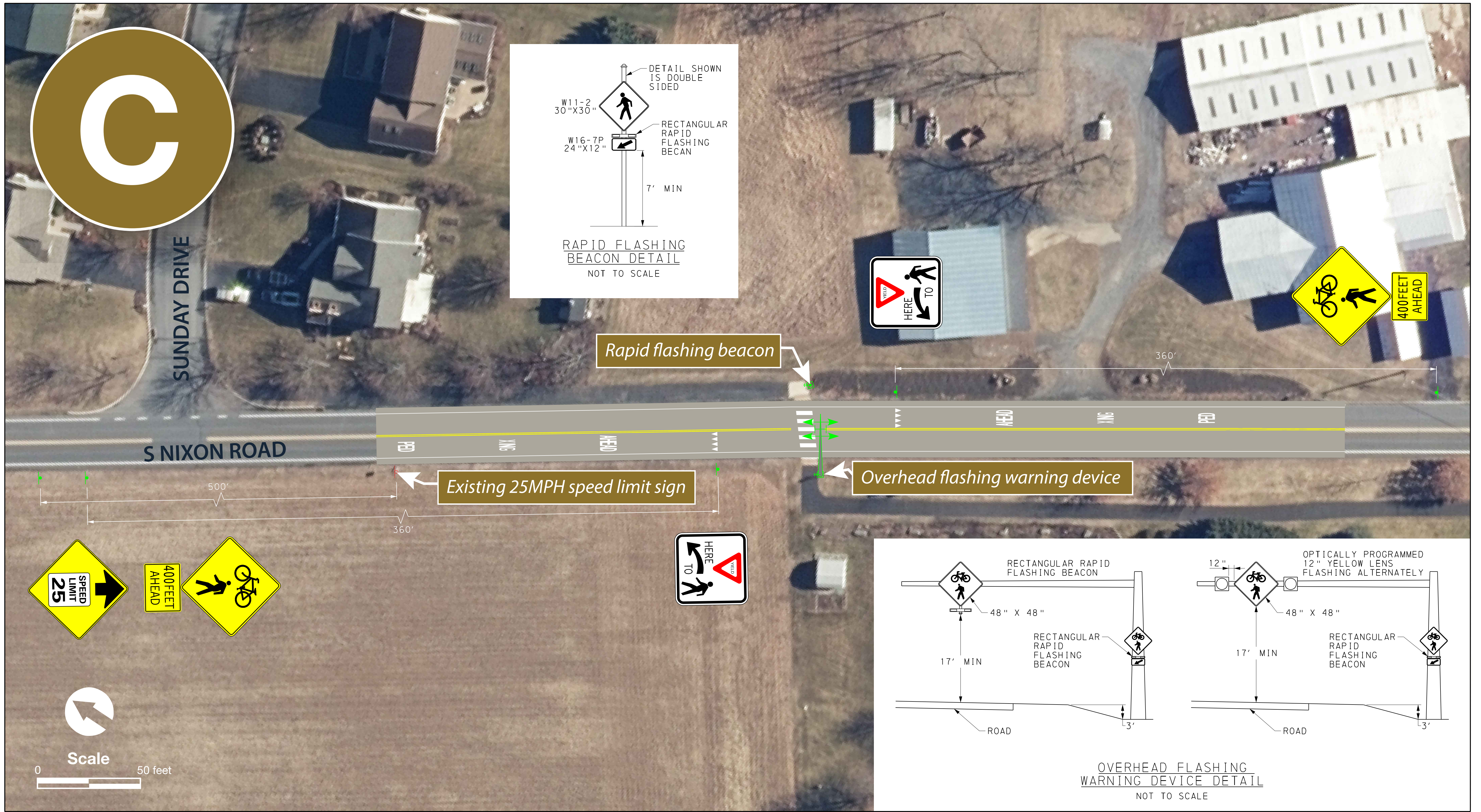




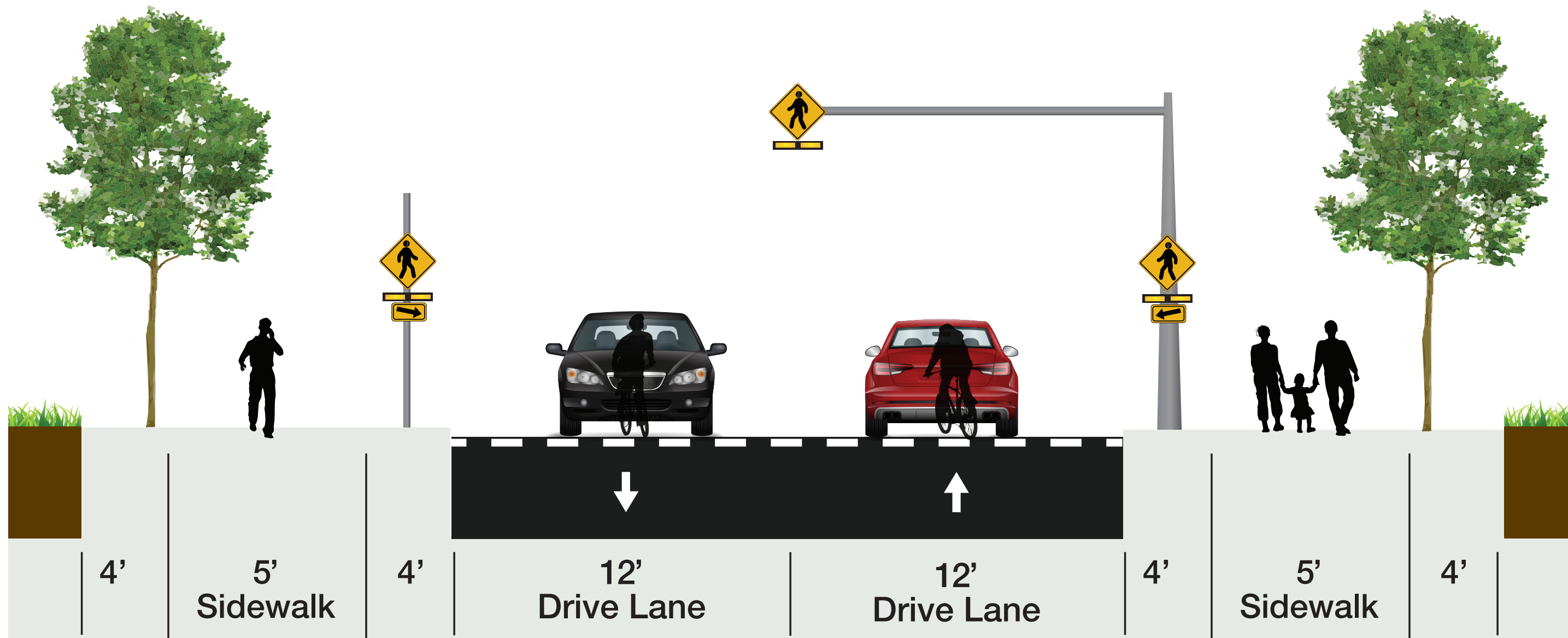
CONCEPT #3 – NIXON ROAD ENHANCED CROSSING AT SHARED USE PATH



PINE GROVE MILLS MOBILITY STUDY



Nixon Road Cross-Section with Enhanced Pedestrian Crossing



Description

- Update the existing shared use path crossing of Nixon Road to create an enhanced crossing with overhead signage, rapid flashing beacons, high-visibility pavement markings and overhead lighting.

Benefits

- The overhead signage and beacons increase visibility of the crossing, particularly in the northbound direction where drivers cannot directly see the crossing until they are too close to stop.
- Designated and enhanced crossings gain the attention of motorists and promote compliance with "Yield to Pedestrian" rules.

Challenges

- Mast arm installation is more costly than ground mounted beacons and signs.