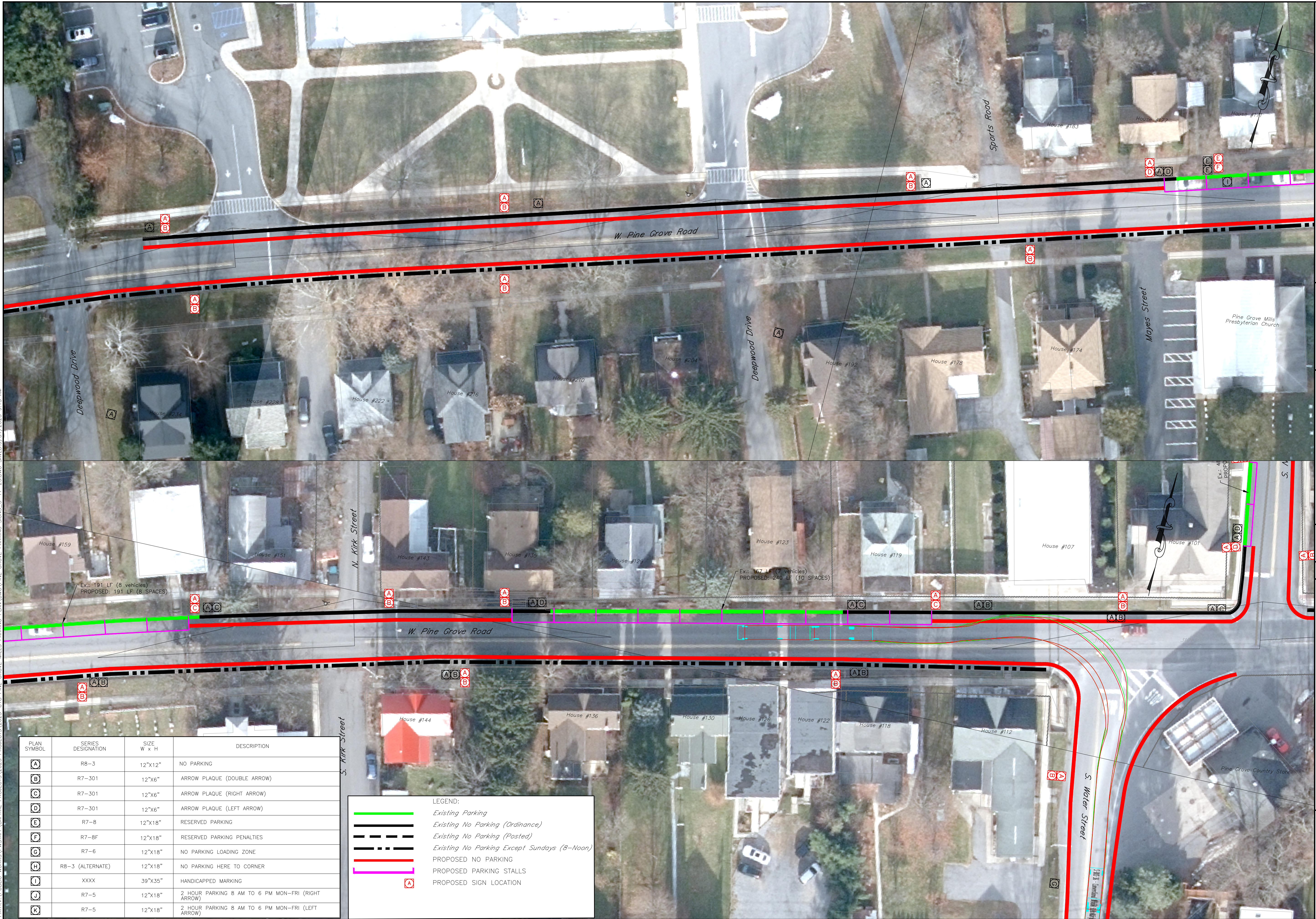


PATH:\A\PUBLIC WORKS\TWPSTAFF\CAPITAL PROJECTS\2023-C18 PINE GROVE MILLS PARKING PLAN.DWG PINE GROVE PARKING SIGNS\_3-17-23.DWG SAVED:5/31/2023 9:13 AM



PLAN SYMBOL	SERIES DESIGNATION	SIZE W x H	DESCRIPTION
A	R8-3	12"x12"	NO PARKING
B	R7-301	12"x6"	ARROW PLAQUE (DOUBLE ARROW)
C	R7-301	12"x6"	ARROW PLAQUE (RIGHT ARROW)
D	R7-301	12"x6"	ARROW PLAQUE (LEFT ARROW)
E	R7-8	12"x18"	RESERVED PARKING
F	R7-8F	12"x18"	RESERVED PARKING PENALTIES
G	R7-6	12"x18"	NO PARKING LOADING ZONE
H	R8-3 (ALTERNATE)	12"x18"	NO PARKING HERE TO CORNER
J	XXXX	39"x35"	HANDICAPPED MARKING
L	R7-5	12"x18"	2 HOUR PARKING 8 AM TO 6 PM MON-FRI (RIGHT ARROW)
K	R7-5	12"x18"	2 HOUR PARKING 8 AM TO 6 PM MON-FRI (LEFT ARROW)

LEGEND:	
	Existing Parking
	Existing No Parking (Ordinance)
	Existing No Parking (Posted)
	Existing No Parking Except Sundays (8-Noon)
	PROPOSED NO PARKING
	PROPOSED PARKING STALLS
	PROPOSED SIGN LOCATION

**FERGUSON TOWNSHIP**  
DEPT. OF PUBLIC WORKS & ENGINEERING  
3147 RESEARCH DRIVE  
STATE COLLEGE, PA 16801  
PHONE: 814-238-4651  
FAX: 814-238-3454  
www.twp.ferguson.pa.us

PINE GROVE MILLS PARKING STUDY  
2023-C18

**W. PINE GROVE ROAD  
PLAN**

DESIGNED BY: LMS  
DRAWN BY: RTS  
CHECKED BY: RAS  
DATE: 5/22/2023

REV.	DATE	REVISION DESCRIPTION

**1**









