

Influenza (Flu)

Flu Symptoms & Complications



Flu Symptoms

Influenza (flu) can cause mild to severe illness, and at times can lead to death. Flu is different from a cold. Flu usually comes on suddenly. People who have flu often feel some or all of these symptoms:

- fever* or feeling feverish/chills
- cough
- sore throat
- runny or stuffy nose
- muscle or body aches
- headaches
- fatigue (tiredness)
- some people may have vomiting and diarrhea, though this is more common in children than adults.

*It's important to note that not everyone with flu will have a fever.

This video includes common signs and symptoms of flu.

Flu Complications

Most people who get flu will recover in a few days to less than two weeks, but some people will develop complications (such as pneumonia) as a result of flu, some of which can be life-threatening and result in death.

Sinus and ear infections are examples of moderate complications from flu, while pneumonia is a serious flu complication that can result from either influenza virus infection alone or from co-infection of flu virus and bacteria. Other possible serious complications triggered by flu can include inflammation of the heart (myocarditis), brain (encephalitis) or muscle (myositis, rhabdomyolysis) tissues, and multi-organ failure (for example, respiratory and kidney failure). Flu virus infection of the respiratory tract can trigger an extreme inflammatory response in the body and can lead to [sepsis](#), the body's life-threatening response to infection. Flu also can make chronic medical problems worse. For example, people with [asthma](#) may experience asthma attacks while they have flu, and people with [chronic heart disease](#) may experience a worsening of this condition triggered by flu.

People at High Risk from Flu

Anyone can get sick with flu (even healthy people), and serious problems related to flu can happen at any age, but [some people are at high risk of developing serious flu-related complications](#) if they get sick. This includes people 65 years and older, people of any age with certain chronic medical conditions (such as asthma, diabetes, or heart disease), pregnant women and children younger than 5 years, but especially those younger than 2 years old.

What are the emergency warning signs of flu?

People experiencing these warning signs should obtain medical care right away.

In children

- Fast breathing or trouble breathing
- Bluish lips or face
- Ribs pulling in with each breath
- Chest pain
- Severe muscle pain (child refuses to walk)
- Dehydration (no urine for 8 hours, dry mouth, no tears when crying)
- Not alert or interacting when awake
- Seizures
- Fever above 104°F
- In children less than 12 weeks, any fever
- Fever or cough that improve but then return or worsen
- Worsening of chronic medical conditions

In adults

- Difficulty breathing or shortness of breath
- Persistent pain or pressure in the chest or abdomen
- Persistent dizziness, confusion, inability to arouse
- Seizures
- Not urinating
- Severe muscle pain
- Severe weakness or unsteadiness
- Fever or cough that improve but then return or worsen
- Worsening of chronic medical conditions

These lists are not all inclusive. Please consult your medical provider for any other symptom that is severe or concerning.

Cold vs Flu

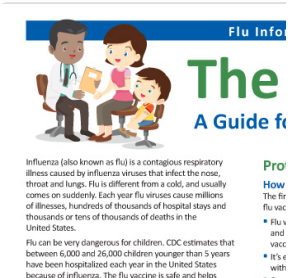
Signs and Symptoms	Cold	Influenza (Flu)
Symptom onset	Gradual	Abrupt
Fever	Rare	Usual; lasts 3-4 days
Aches	Slight	Usual; often severe
Chills	Uncommon	Fairly common
Fatigue, weakness	Sometimes	Usual

Signs and Symptoms	Cold	Influenza (Flu)
Sneezing	Common	Sometimes
Chest discomfort, cough	Mild to moderate; hacking cough	Common; can be severe
Stuffy nose	Common	Sometimes
Sore throat	Common	Sometimes
Headache	Rare	Common

Other Flu Questions

- [What is influenza?](#)
- [When is the flu season?](#)
- [What is the treatment?](#)
- [What are emergency warning signs of flu sickness?](#)

Digital Resources



[PDF - 566 KB, 8.5" x 11"]

Flu Vaccine Finder

Find flu clinics near you.
Everyone six months of age and older needs a flu vaccine.

powered by **HealthMap**