

Jonathan Risley

CRCOG Emergency Management Coordinator

EM Overview

Overview

- What is EM?
- Codes, Laws & Rules
- COG & PSU
- Services
- Requirements
- Summary



A copy of the documents, links & PowerPoint can be found here.

What is Emergency Management?

- “is the managerial function charged with creating the framework within which communities reduce vulnerability to threats/hazards and cope with disasters.” – FEMA
- “The judicious planning, assignment and coordination of all available resources in an integrated program of prevention, mitigation, preparedness, response and recovery for emergencies of any kind, whether from attack, man-made or natural sources.” – PA Title 35
- What does this mean for you?

Codes, Laws & Rules

- Consolidated Statutes – [Title 35](#)

§ 7501. General authority of political subdivisions.

- (a) **Establishing emergency management organization.**--Each political subdivision of this Commonwealth is directed and authorized to establish a local emergency management organization in accordance with the plan and program of the Pennsylvania Emergency Management Agency. Each local organization shall have responsibility for emergency management, response and recovery within the territorial limits of the political subdivision within which it is organized and, in addition, shall conduct such services outside of its jurisdictional limits as may be required under this part.



The screenshot shows the Pennsylvania General Assembly website. The header includes navigation links for 'general assembly', 'senate', 'house', 'session info', 'legislation', 'statutes', and 'login'. A search bar is present with the text 'Legislation Quick Search' and 'Enter a search term...'. The main content area displays the breadcrumb 'Home / Statutes of Pennsylvania / Consolidated Statutes / Title 35' and the title 'Title 35' in a large font. Below the title, there is a notice: 'A provision of this statute is set to expire in 2024'. At the bottom, the text 'TABLE OF CONTENTS' and 'TITLE 35 HEALTH AND SAFETY' is visible.

BOROUGH COUNCIL HANDBOOK

Twelfth Edition | August 2019



Commonwealth of Pennsylvania
PA Department of Community & Economic Development

TOWNSHIP SUPERVISOR'S HANDBOOK

Thirteenth Edition | March 2018






Commonwealth of Pennsylvania
PA Department of Community & Economic Development | dced.pa

Emergency Management for Municipal Officials



Handbook 2023

-  pema.pa.gov & ready.pa.gov
-  facebook.com/pemahq
-  twitter.com/pemahq



KEYSTONE
EMERGENCY
MANAGEMENT
ASSOCIATION



Updated in coordination with the Keystone Emergency Management Association

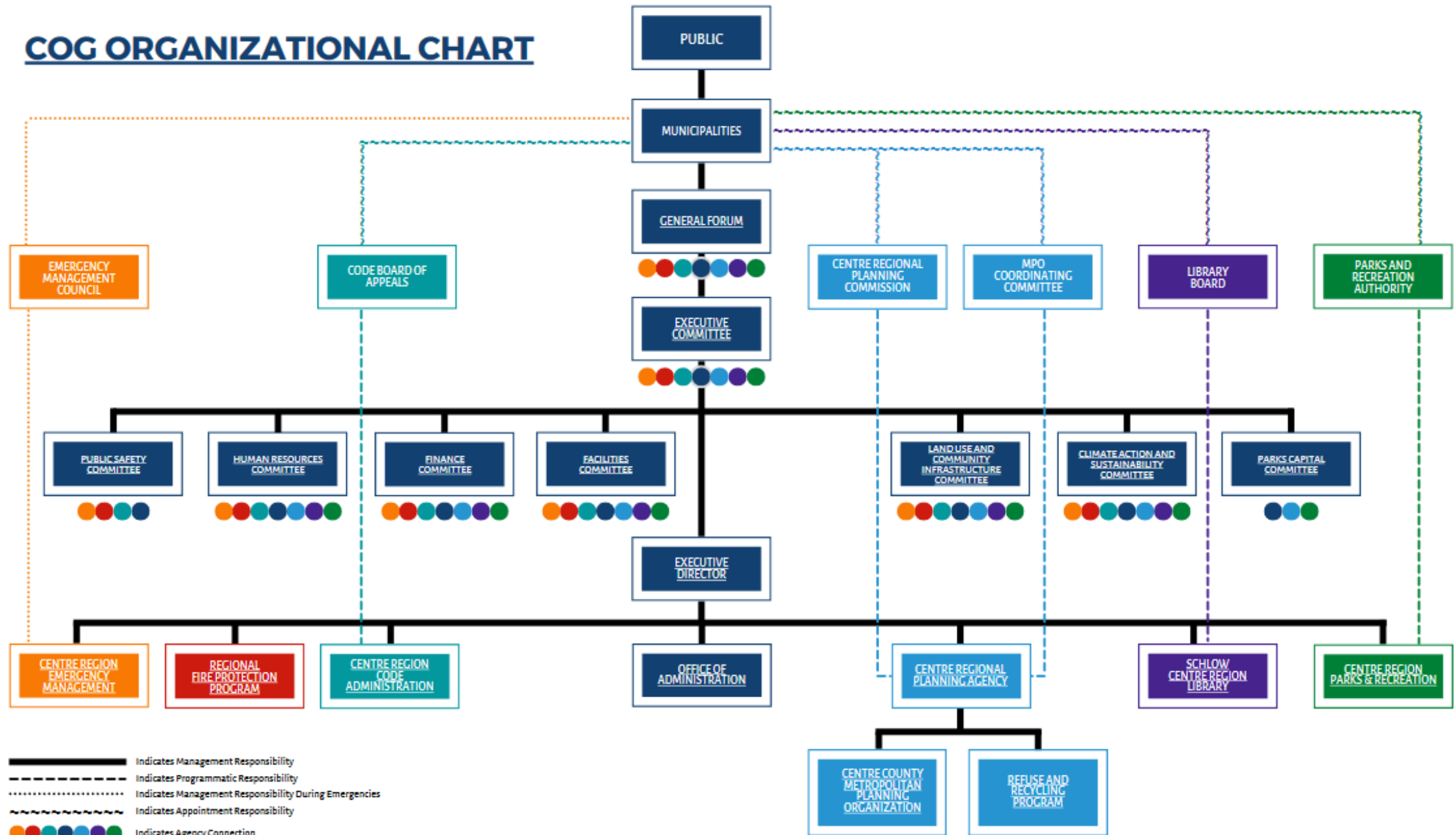
COG & PSU

- COG Articles of Agreement – [Emergency Management](#)
- CRCOG & PSU
 - Established Aug 2002
 - [Joint Plan](#)
 - EOCs
 - Resources



PennState

COG ORGANIZATIONAL CHART



Services

- 1 FTE & 1 PT
- Liaison with 6 municipalities & PSU to Centre County
- Special Events Planning in Centre Region
- Situation Awareness
- Disaster Response
 - Emergency Declarations
 - Shelters
 - IMT/ICS
 - Public & individual assistance support
- Public Education

Requirements

Elected Officials

Required

- IS – 100
- IS – 700

Recommended & Advanced

- IS – 200
- IS – 800
- ICS – 300*
- ICS – 400*

Emergency Management Coordinators

Elected Courses

PEMA Certifications

- Associate*
- Professional*

National Emergency Management Academies*

- Basic
- Advanced
- Executive

Summary



A copy of the documents, links & PowerPoint can be found here.