

EXERCISE #4 – PARK MASTER PLANS

In the 2022 RPOS Plan Update, the design team is responsible for developing park master plans for:

1. **Fairbrook Park**
2. **Greenbriar-Saybrook Park**

Based on the discussion and results from Exercise #3, the design team would like workshop participants to provide their input on the following:

1. Which of the parks’ existing features and facilities do you think are positive and should remain as-is or receive minor enhancements?
2. Which of the parks’ existing features and facilities should be considered for removal or replacement to meet the Goals and Recommendations of the RPOS Plan?

INSTRUCTIONS:

- Please review the attached maps for Fairbrook Park and Greenbriar-Saybrook Park.
- **Place a Checkmark** over features to remain as-is or enhance in the park master plans.
- **Place an X** over features to **Remove or Replace** in the park master plans.
- **OR – Fill in the chart below for each park.**

Fairbrook Park				
	KEEP	ENHANCE	REMOVE	REPLACE
Baseball Field #2				
Playground #1				
Baseball Field #1				
Basketball Court				
Pavilion				
Playground #2				
Multi-Use Field				
No Mow Zone				
Parking Lot & Internal Roads				
Paved Paths				
Gravel Paths				
Other:				

Greenbriar-Saybrook Park				
	KEEP	ENHANCE	REMOVE	REPLACE
Pavilion #1				
Basketball Court				
Horseshoe Pit				
Playground				
Pavilion #2				
Memorial Garden				
Parking Lot				
Paved Paths				
Other:				

**Fairbrook Park
Inventory Map**
Ferguson Township
Centre County, Pennsylvania

-  Park Boundary
-  Parcel Boundary
-  Local Roads
-  Multi-Use Field
-  No Mow Zone
-  Parking/Roads
-  Paved Paths
-  Gravel Paths

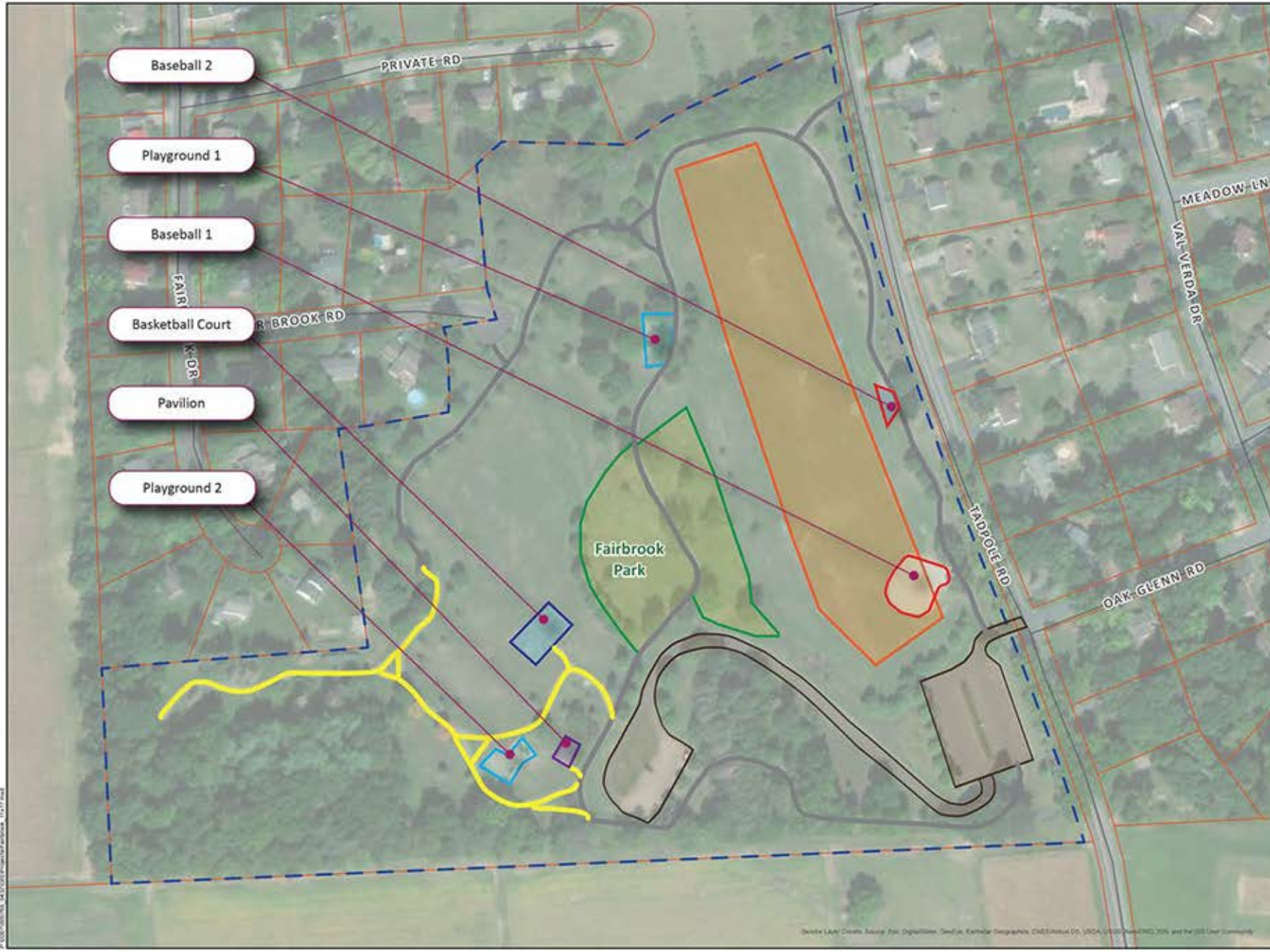


Mapping derived from data provided by TRK, PennDOT, Centre County, and USGS.

10/21/2021 RA: MM GIS: ACV QA: TS R000769-0432

HRG 776 Bull Run Crossing
Suite 200
Lewisburg, PA 17837
570.524.6744 [phone]
www.hrg-inc.com

HRG, Subsidiary & Group, Inc.
Engineering & Related Services
An Employee-Owned Company



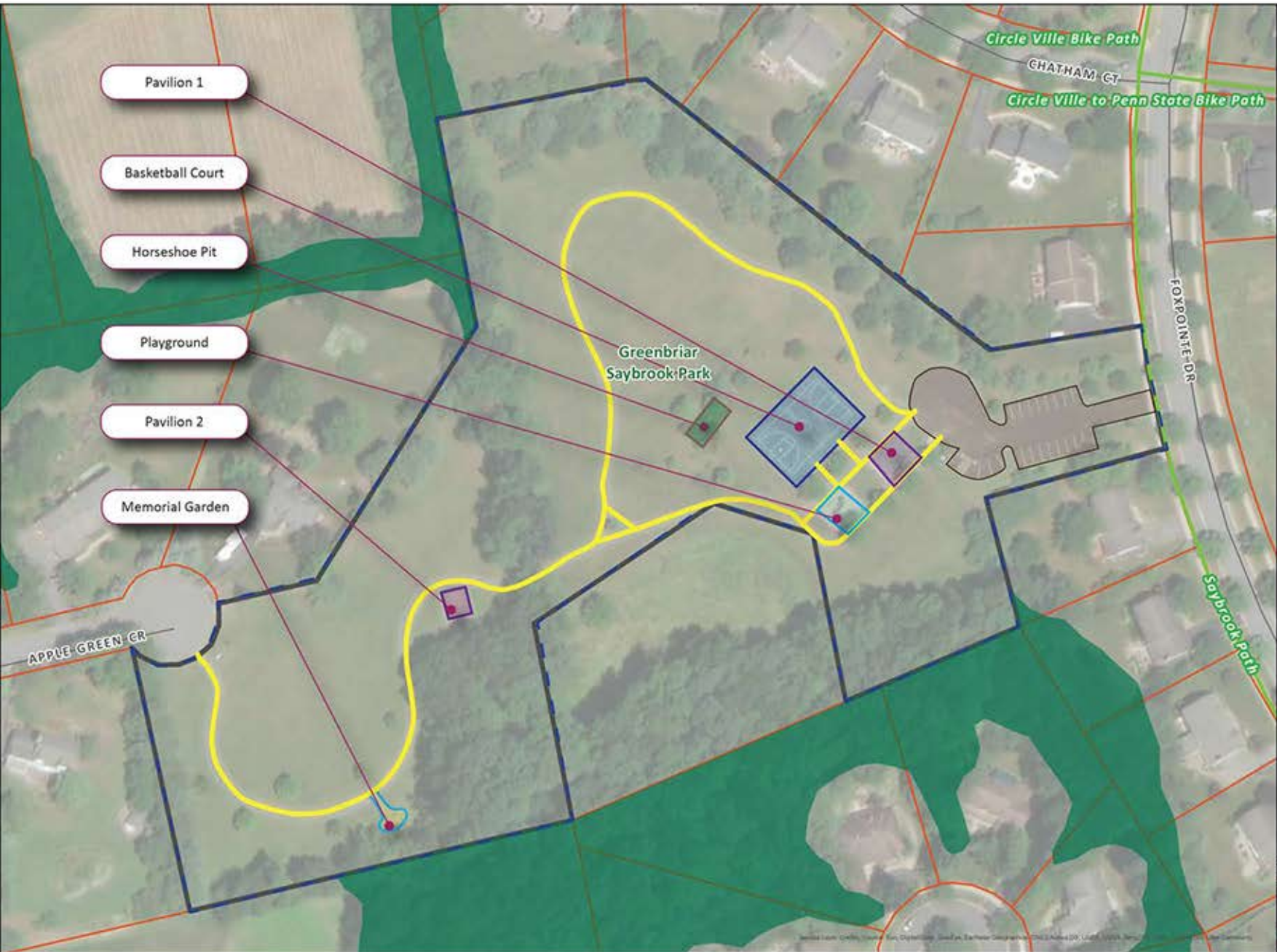
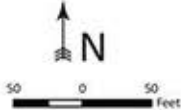
©2021 LEA/ Design, Survey, Inc. DigitalGlobe, GeoEye, Earthstar Geographics, CNES/Airbus DS, USDA, USGS, AeroGRID, IGN, and the GIS User Community

P:\007\000769-0432\00769\mxd\mapbook\Fairbrook_T1.rvt.mxd

Greenbriar Saybrook Park Inventory Map

Ferguson Township
Centre County, Pennsylvania

- Park Boundary
- Trails
- Wooded Areas
- Parcel boundary
- Local Roads
- Parking/Roads
- Gravel Paths



- Pavilion 1
- Basketball Court
- Horseshoe Pit
- Playground
- Pavilion 2
- Memorial Garden

Greenbriar Saybrook Park

APPLE GREEN CR

CHATHAM CT

FOXPOINTE DR

Saybrook Path

Circle Ville Bike Path

Circle Ville to Penn State Bike Path

Mapping derived from data provided by FRR, PennDOT, Centre County, and UNIS.
10/21/2021 PA: MM GIS: ALV QA: TS 800768 0432

HRG 776 Bull Run Crossing Suite 200
Lewisburg, PA 17837
570.524.6744 [phone]
www.hrg-inc.com

Herbich, Rosemeyer & Grotz, Inc.
Engineering & Related Services
An Employee-Owned Company

10/21/2021 10:55 AM C:\GIS\Projects\GIS\Inventory_Map_Saybrook_10.17.mxd