

Ferguson Township Stormwater Advisory Committee

Meeting #1

September 27, 2017

Noon – 2 p.m.



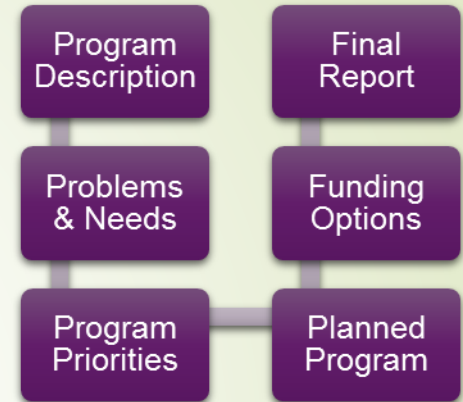
Ferguson Township User Fee Feasibility Study

- Welcome
- Introductions
- Today's Topics
 - Overview of the User Fee Feasibility Study
 - Township Current Services Overview
 - Discussion – Expectations and Issues
 - Future Meetings, Topics, and Logistics



Project “Roadmap”

1. What is the Township current stormwater management program?
2. What are the stormwater related problems, issues, needs, and opportunities currently faced by the Ferguson Township? What is the compelling case to change current funding methods?
3. What stormwater program priorities should guide Ferguson Township in the next three to five years? What is the long-range goal for these services?
4. What is the optimal organizational structure to deliver services to the community? Are there staffing needs that should be considered?
5. What specific Township program elements require additional funding or a change in funding strategy?
6. What is (are) the best way(s) to pay for stormwater management? Are there multiple funding strategies that can be used to accomplish the goals of the program?
7. Is it feasible to establish a user-fee based funding strategy? What are the steps to implementation?



Stormwater Advisory Committee Role

- Unique opportunity to influence the path forward in stormwater management services
- Learn about the Township's stormwater issues
- Provide feedback on the policies to establish a future program
- Educate others about the program
- Provide feedback to staff and the Board of Supervisors



Typical Policy Issues

- Program Goals & Priorities
- Appropriate Levels of Service
- Funding Options including User Fees Methodology & Structure
- Secondary Funding Methods
- Future Program Structure
- Policies that Impact Stormwater

Program and Policy Review Process

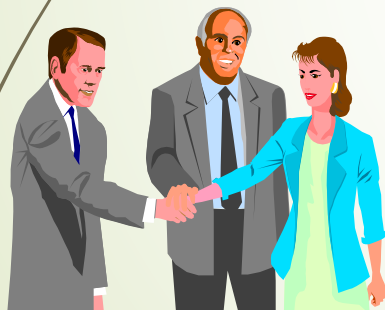
**Draft
Discussion
Background**



Discuss Key Issues



**Revise
Based on
Feedback**



**Agree on Final
Policy or
Recommendations**



**Review Revised
Program or Recommendations**

Meeting Ground Rules

- Please participate !
- Everyone's Opinion is Important
- Work Toward Consensus
- Represent Your Stake but...
- Think Community-wide
- Read Ahead
- Stow your cell phones



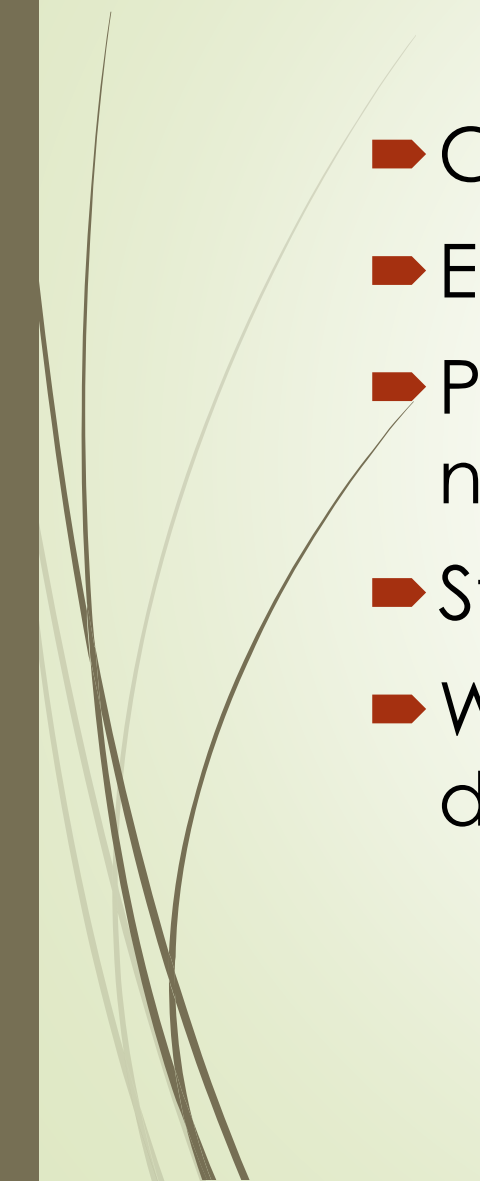
Stormwater Management Goals



- Protect human health and the environment
- Minimize property loss and damage
- Maintain drainage system
- Promote economic development
- Support environmental objectives



Characteristics of Effective SW Programs

- Clearly defined goals
 - Effective financial strategies
 - Political/jurisdictional boundaries are not barriers
 - Strong technical capabilities
 - Well defined procedures/policies for development management
- 

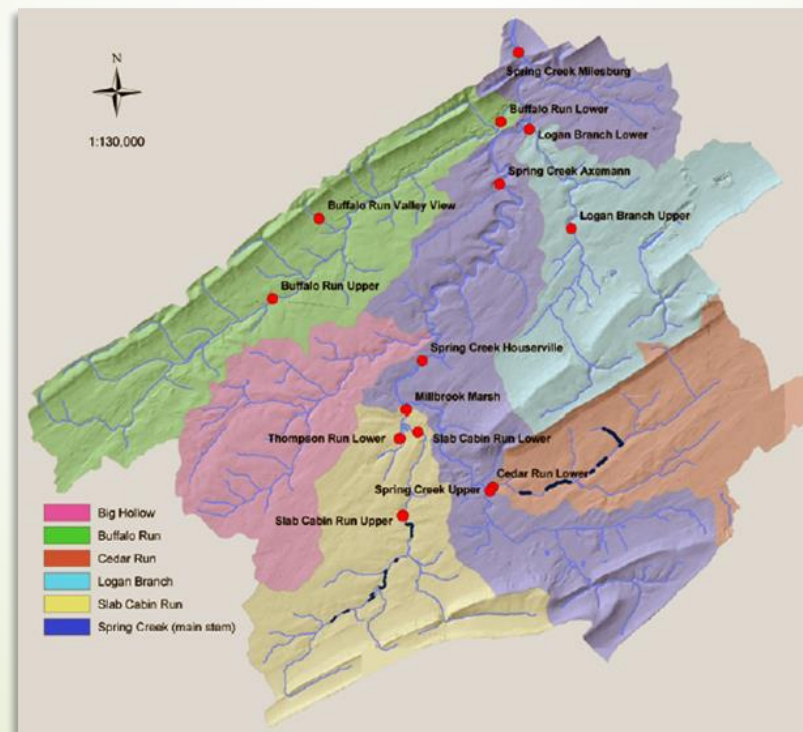
Current Stormwater Programs and Drivers



Ferguson
Township
Pennsylvania

Current Services in Ferguson

- Land Area: Approximately 47.6 square miles (approximately 30,464 acres)
- Population: Approximately 17,690 (2010 Census)
- Predominance of Karst and Sinkhole Geology (direct connection to water supply)
- Water Supply Largely Well (for Township and adjacent communities)



Ferguson Township Drainage Basins Map. (source: "Spring Creek Watershed MS4 Partners" and "PennState: Riparia" website)

Mandates as Drivers for Stormwater Programs

- Total Maximum Daily Loads (TMDLs) & PRP's
- Municipal Separate Storm Sewer System (MS4) Permit
- Chesapeake Bay Pollution Reduction Plan (CBPRP)
- Source Water Supply Protection Planning
- Act 167: Stormwater Management Plan
- Conservation Plan and Manure Management Plan (Agricultural Regulations)



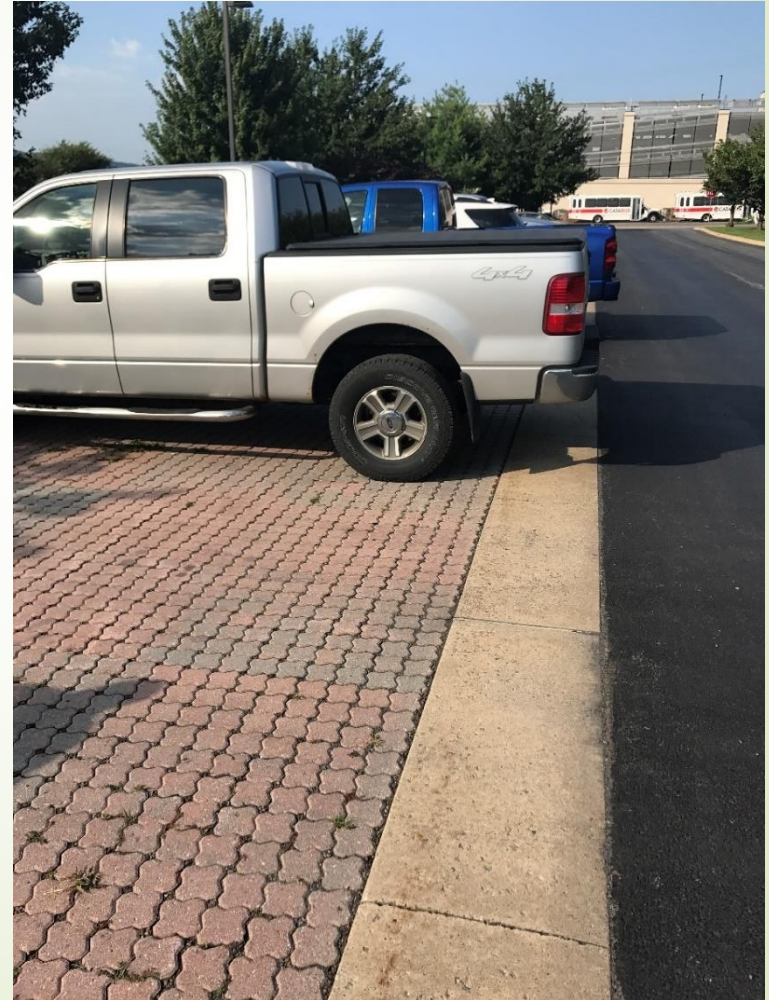
Primary Responsibility of Public Works Department

- Water Quality Permit Compliance – MS4
- Engineering
- System Information Management - GIS
- Maintenance of public drainage
- Inspection – public and private facilities
- Capital Projects – typically linked to roadway projects
- Development Policies and Support
- Public Education
- Flood Management Control



Water Quality Treatment

- MS4 Permit – Urban Area (UA) Impacts
- TMDL Compliance (and PRP's)
- Green (Stormwater) Infrastructure or “GI”
- Infiltration (realizing limitations)



Channel Maintenance

- Inspections
- Repair
- Rehabilitation
- Public versus private channels



Sediment Impacts

- Chesapeake Bay Mandates
- Channel Maintenance



Pipe and Underground Channels

- Large “Hidden” Asset
- Programs are reactive due to limited funding



Private System Maintenance

- Multiple Owners vs. Single Owner Serving Multiple Properties
- Inspection and Enforcement
- Residential vs. Commercial Properties



Multi-Purpose Solutions

Use Opportunities to Align Goals

- Water Quality – Public Recreational Facilities
- Facility Ownership – Facility Maintenance





Issues and Challenges



- Drainage Infrastructure
 - Pipe Maintenance and Repair
 - Generally limited to roadway improvements today
 - Pipe Inspection
 - Need to quantify problems
 - Inlet Inspection and Maintenance
 - Need for increased frequency of inspection and lack of a corrective action plan
- Policy
 - Residential facilities - maintenance on private property
 - Urban versus rural roles and responsibilities
 - Capital program investment strategy

Stormwater Cost Centers

- **Capital Projects** –improve, rehabilitate, or otherwise construct stormwater management facilities.
- **Planning & Permitting Compliance** –planning effort for projects or permits and costs for permit compliance, including fees and public outreach efforts.
- **Staff** –staff operating within the Public Works Department (e.g., Township Engineer, GIS Technician, etc.)
- **Maintenance** –maintaining existing facilities or structures. It can include repairs, mowing operations, street sweeping, etc.
- **In-House Projects** – This includes those projects that are undertaken by Township forces (Public Works staff).



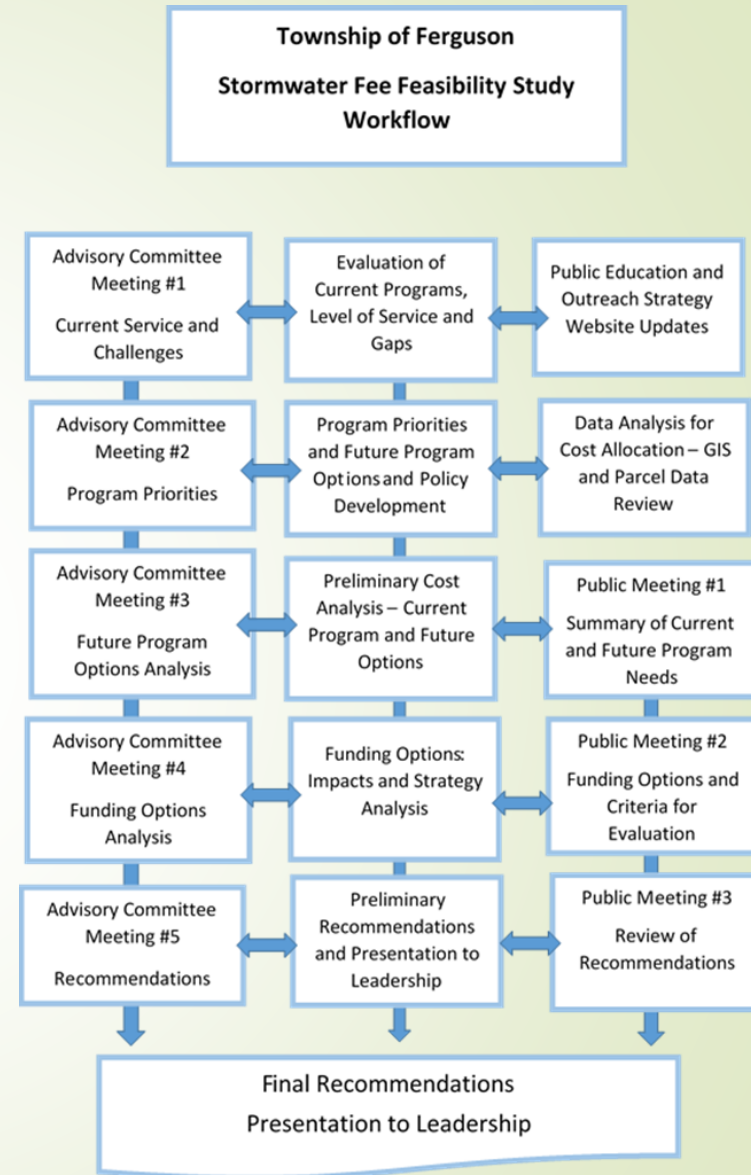
Discussion and Feedback

- Member Expectations – Process and Engagement
- Stormwater Needs and Challenges in Ferguson Township
 - Awareness of challenges facing Township for permits?
 - Is neighborhood flooding a concern?
 - Should residents be responsible for drainage maintenance?
- Questions/Feedback



Meeting Topics and Logistics

- Future Topics:
 - Program Priorities
 - Future Program
 - Funding Options
 - Recommendations
- Meeting Day/Time
- Meeting Location



Thank you for your
participation.

